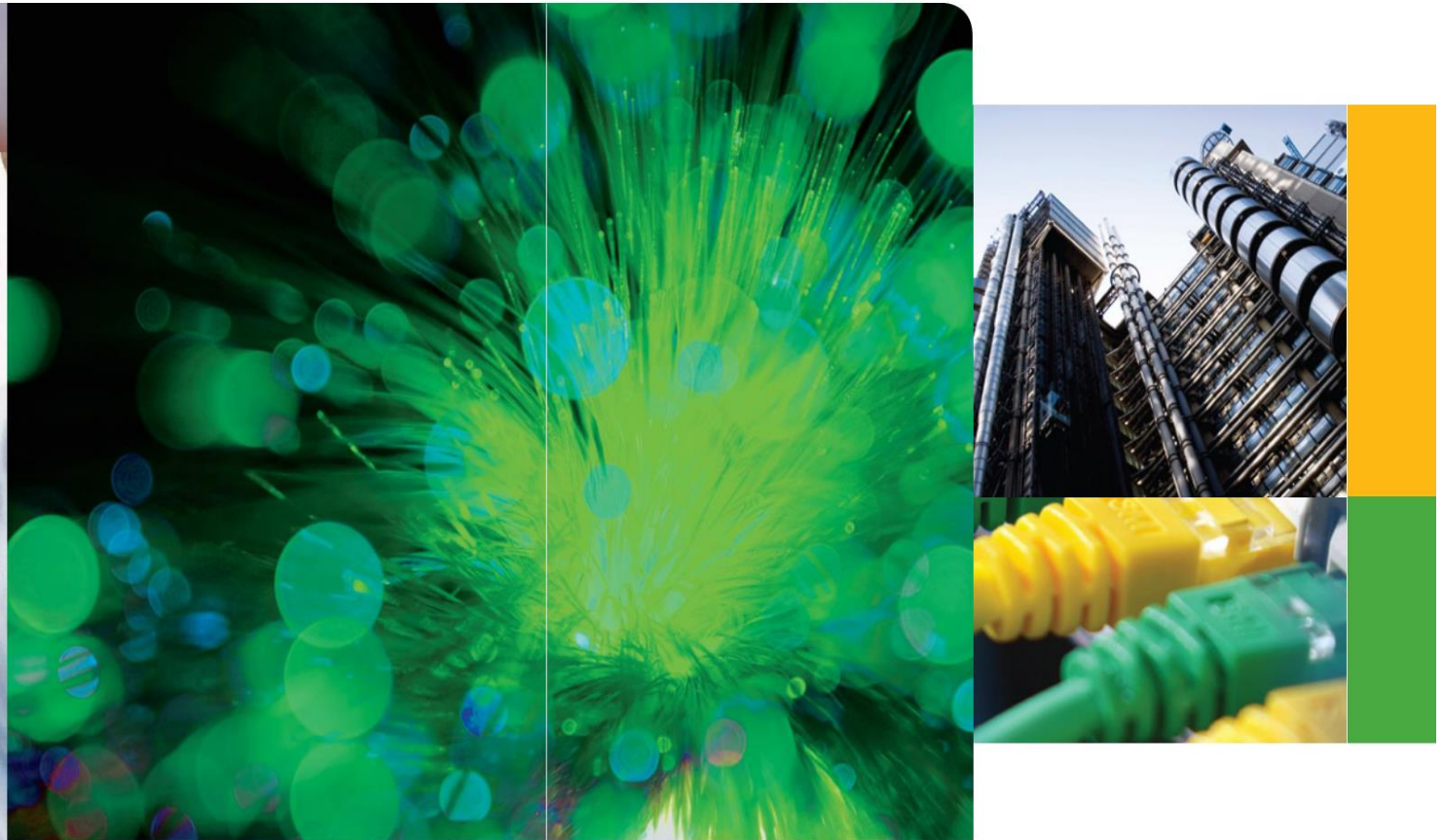




## LAN Cabling Products Ltd



### Structured Cabling Solutions

*“LCP Partner of choice for innovative data communication solutions”*

[WWW.LCP.CO.NZ](http://WWW.LCP.CO.NZ)

## **Introduction - LAN Cabling Products Limited (LCP)**

Established in 1993 in New Zealand as a manufacturer of telecommunication voice panels and cable assembly. With increasing demand in technologically advanced products and services LCP started Importing and distributing in New Zealand 1993 and the Pacific Islands in 2003.

LCP has BICSI qualified staff to give professional advice for any Fibre Optic and Copper Cabling Systems or your network application needs.

Our free professional advice and solutions are offered to help our customers achieve fluidity in their telecommunication.

LCP also offer Structured Cabling Course for installers and end-users; please contact us for our next training sessions.

LCP also represent many reputable brands such as **Corning/3M**, **PROPATCH**, **CISCO**, **AFI International**, **Channell**, **Sumitomo**, **Optical Cable Corporation (OCC)**, **Fluke Networks**, **BEAM Communication**, **AV PRO**, **Micronet Tellabs** and **Emtelle**.

From 1993 in New Zealand & Fiji, LCP serves a variety of clients such as government departments, telecommunication companies, data centers and ISP's, universities, schools, airports, medical facilities, security industries, manufacturing industry, corporate Offices. With data rates increasing every day, having the cabling done to specification, eliminates 90 per cent of the network problems and downtime. 3M/Corning Cabling Systems is an approved solution for Government of Fiji for all their Ministries and offices.

LCP currently provides a wide range of solutions sourced internationally and locally.

- Structured Cabling Products
- Copper UTP and STP
- Fibre Optic Cabling solutions
- Passive Optical LAN (GPON)
- LAN, WAN and Campus solutions
- Wireless Solutions and PABX Systems
- Networking Products and Cable assemblies
- Ethernet Switches and Industrial Converters.
- Racks, Cabinets, Cable Management products.
- Customized products to suit application

LCP have certified installers/partners who can carry out installation professionally and provides 3M/CORNING and PROPATCH 25 Years system performance warranty to end customer sites.

# **Contents**

<b>1:0 3M/Corning Volition Copper Cabling Solutions</b>	<b>pages 4 - 11</b>
<ul style="list-style-type: none"> <li>▪ Copper Cables (Cat5e, Cat6, Cat6A, Cat7, Cat8)</li> <li>▪ Patch Panel (Unloaded, 110 IDC Loaded)</li> <li>▪ RJ45 Keystone Jacks (110 IDC, Shuttered Toolless)</li> <li>▪ Keystone Clips/Blanks &amp; Cable Management Solutions</li> <li>▪ IP67 RJ45 Outdoor Copper Solution &amp; Outlet Boxes</li> <li>▪ Patch Leads &amp; Cable Management bars</li> <li>▪ Scotchlock Butt Connectors</li> </ul>	
<b>2:0 3M/Corning Volition Fibre Cabling Solutions</b>	<b>pages 12 - 23</b>
<ul style="list-style-type: none"> <li>▪ Fibre Optic Cables (Indoor/Outdoor, Loose Tube Gelfilled)</li> <li>▪ Fibre Optic Splice Trays- Patch panels and Boxes</li> <li>▪ Fibre Optic No Polish Connectors &amp; Mechanical Splice</li> <li>▪ Fibre Optic Passive Optical LAN (POL) Solutions</li> <li>▪ Fibre Optic Pigtails</li> <li>▪ Fibre Optic Patch Cords</li> <li>▪ Fibre Optic Field Deployable Reels</li> <li>▪ Fibre Optic Closures/Domes</li> </ul>	
<b>3:0 PROPATCH Copper Cabling Solutions</b>	<b>pages 24 - 33</b>
<ul style="list-style-type: none"> <li>▪ Copper Cables (Cat5e, Cat6, Cat6A, Cat7, Cat8)</li> <li>▪ Patch Panels (Unloaded, 110 IDC Loaded)</li> <li>▪ RJ45 Keystone Jacks</li> <li>▪ Cat5e, Cat6, Cat6A RJ45 Module &amp; Keystone Clips</li> <li>▪ Cable Management Solutions</li> <li>▪ Patch Leads &amp; Velcro</li> <li>▪ Evo Self Tracing Patch Leads &amp; RJ45 copper &amp; Fibre Outlet Solutions</li> <li>▪ Data outlet Face Plate &amp; Accessories</li> </ul>	
<b>4:0 Telephone Voice Cables &amp; Accessories</b>	<b>pages 34 - 36</b>
<ul style="list-style-type: none"> <li>▪ Cat3 Cables, Flat Cables, Jumper Cables/Voice Patch Panels &amp; 10 pair Modules</li> <li>▪ Frames &amp; Boxes for Krone Type Modules</li> </ul>	
<b>5:0 PROPATCH Fibre Optic Cabling Solutions</b>	<b>pages 37 - 43</b>
<ul style="list-style-type: none"> <li>▪ Fibre optic cables (Indoor/outdoor, lose tube Gelfilled, Rodent Proof, Armored, ADSS, Military, Specialty Cables)</li> <li>▪ Fibre Optic Patch Panels/ Trays</li> <li>▪ Fibre Optic Boxes-Frames &amp; Adapters</li> <li>▪ Fibre Optic Pigtails</li> <li>▪ Fibre Optic Patch Leads &amp; Pre-terminated Assemblies</li> <li>▪ Fibre Optic Deployable Reels</li> <li>▪ Fibre Optic Dome closures &amp; Media Convertor</li> </ul>	
<b>6:0 FTTX/FTTH Solutions</b>	<b>pages 44 - 45</b>
<ul style="list-style-type: none"> <li>▪ Hybrid Copper + Fibre Cable &amp; Indoor/Outdoor Drop Wire Cables</li> <li>▪ 3M/Corning One Pass Fibre Solutions, Termination Boxes &amp; Fibre Leads</li> </ul>	

<b>7.0 Audio Visual-Radio Frequency-Coax &amp; HDMI Solutions</b>	<b>pages 46 - 48</b>
<ul style="list-style-type: none"> <li>▪ Coax cables (RG6 &amp; RG11), Connectors &amp; Tools</li> <li>▪ Amplifier, Modulators and HDMI Extenders</li> <li>▪ Audio Visual Leads &amp; Security/Alarm Cables</li> </ul>	
<b>8:0 Data Networking-Server Racks/Cabinets</b>	<b>pages 49 - 53</b>
<ul style="list-style-type: none"> <li>▪ Wall Mount Frames, Open Rack Frames and Wall Mount Cabinets</li> <li>▪ Floor Standing Server Racks/Cabinets</li> <li>▪ Outdoor IP Rated Wall Mount, Free standing Cabinets</li> <li>▪ Argent V50 Vault Data Racks</li> </ul>	
<b>9:0 Cabinet Accessories</b>	<b>pages 54 - 55</b>
<ul style="list-style-type: none"> <li>▪ Power Outlet Boards</li> <li>▪ Cabinet Shelves, Fan Kits &amp; Plinths for Floor Standing Cabinet</li> <li>▪ Cable Management Solutions (Refer Page 30)</li> </ul>	
<b>10:0 Cable Pathway</b>	<b>pages 56 - 59</b>
<ul style="list-style-type: none"> <li>▪ Catenary Wire, Hooks, Velcro, Conduits &amp; Fibre Optic Raceway</li> <li>▪ Cable Trays- Ladder Cable Trays and Cable Trunking</li> <li>▪ Basket Cable Trays &amp; Modempak Skirting ducting Solutions</li> <li>▪ Umbilical Products &amp; Modempak Service Columns</li> </ul>	
<b>11.0 Outside Plant Products</b>	<b>pages 60 - 62</b>
<ul style="list-style-type: none"> <li>▪ Channell Copper Heat Shrink Openable Joint Closures</li> <li>▪ Channell Copper Aerial Heat Shrinkable Openable Closures</li> <li>▪ Channell Underground Power Isolation Closures</li> </ul>	
<b>12:0 Channell Telco/Electrical Vault Pits Introduction</b>	<b>pages 63 - 71</b>
<ul style="list-style-type: none"> <li>▪ Channell Bulk 0,1, 2,3, 4, 5, 7, 8 and 9 Series Telco/Electrical Pits</li> <li>▪ Channell Bulk Base Extensions, Bulk Ductile Iron Cover &amp; Rapid Locate</li> <li>▪ Channell 14000 Series Fibre Optic closures</li> <li>▪ Outside Plant Copper &amp; Fibre cables</li> <li>▪ Outdoor Plant Encapsulated Gel &amp; PLP Communication Products</li> </ul>	
<b>13.0 Active Equipment's</b>	<b>pages 72 - 77</b>
<ul style="list-style-type: none"> <li>▪ PROPATCH MM &amp; SM Media Convertors &amp; SFP/GBIC Transceivers</li> <li>▪ Micronet Network Switches and Cisco Network Switches</li> <li>▪ TP Link Network Switches</li> <li>▪ PROPATCH Fibre Optic PLC Splitters (Box &amp; 19" Rack Mount Trays)</li> <li>▪ Passive Optical Solutions for Local Area Network (POL)</li> </ul>	
<b>14.0 Optical Cable Corporation (OCC) Fibre Solutions</b>	<b>pages 78 - 79</b>
<ul style="list-style-type: none"> <li>▪ Fibre Commercial Enterprise, Military Fibre Solutions</li> <li>▪ Fibre Industrial/ Mining Solutions &amp; Broadcast Solutions</li> </ul>	
<b>15.0 Tools and Tool Hire</b>	<b>pages 80 - 83</b>
<b>16.0 Copper &amp; Fibre Optic Training</b>	<b>pages 84 - 85</b>
<b>17.0 Cabling Codes and Standards</b>	<b>page 86</b>



## **3M/Corning Structured Cabling Solutions**

### **Customer Service Excellence**

3M/Corning, with offices around the world combines the financial stability of a multi-national organization. Through its long-term experience and global reach, the company understands the issues driving the network market today.

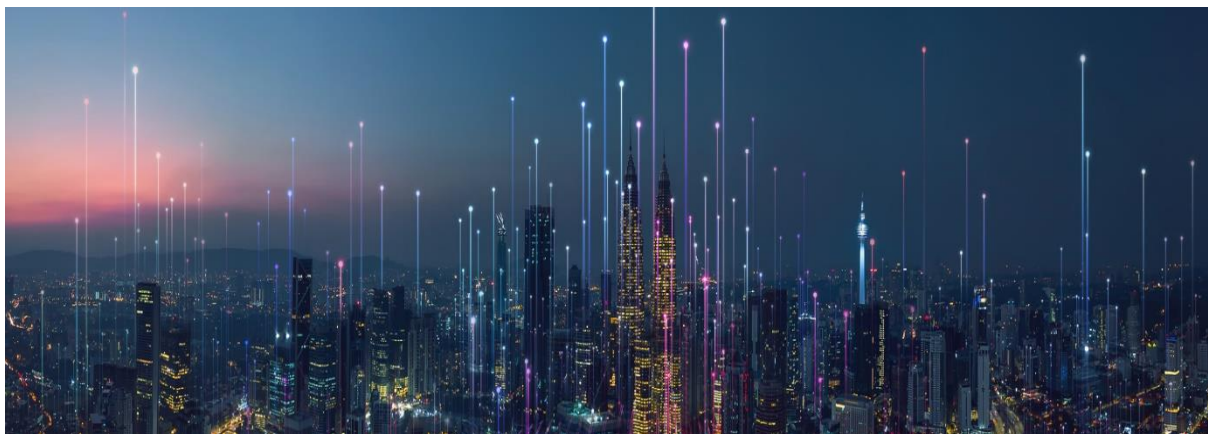
LCP has the support of 3M/Corning who is ideally positioned to help customers, supporting our efforts to bring new services to market or meeting an urgent project deadline by supplying products that have a track-record of reliability and quality. LCP working with its channel partners 3M/Corning we can ensure national coverage with availability, supply and support.

### **Enterprise Network Solutions**

3M/Corning offers Volition Enterprise Network Solutions for high performance copper, fibre, and copper/ fibre hybrid networks. At the heart of any structured cabling system is the interconnection technology. 3M/Corning provides several innovative solutions such as a tool-less RJ45 jack for copper solutions for Cat. 5e, Cat. 6, Cat6A, Cat7(10G).

For the Fibre 3M/Corning No Polish Connector in both LC and SC formats. Volition enterprise network solutions are designed for streamlined installation, reduced labor and component costs, with the backing of a company renowned globally for its quality and innovation.

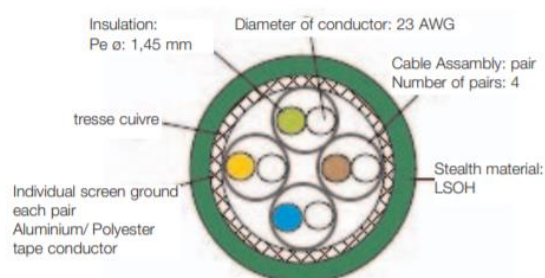
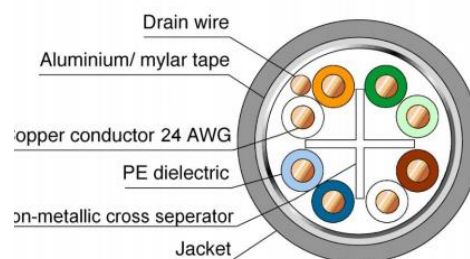
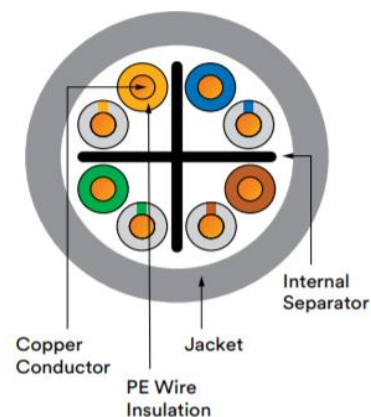
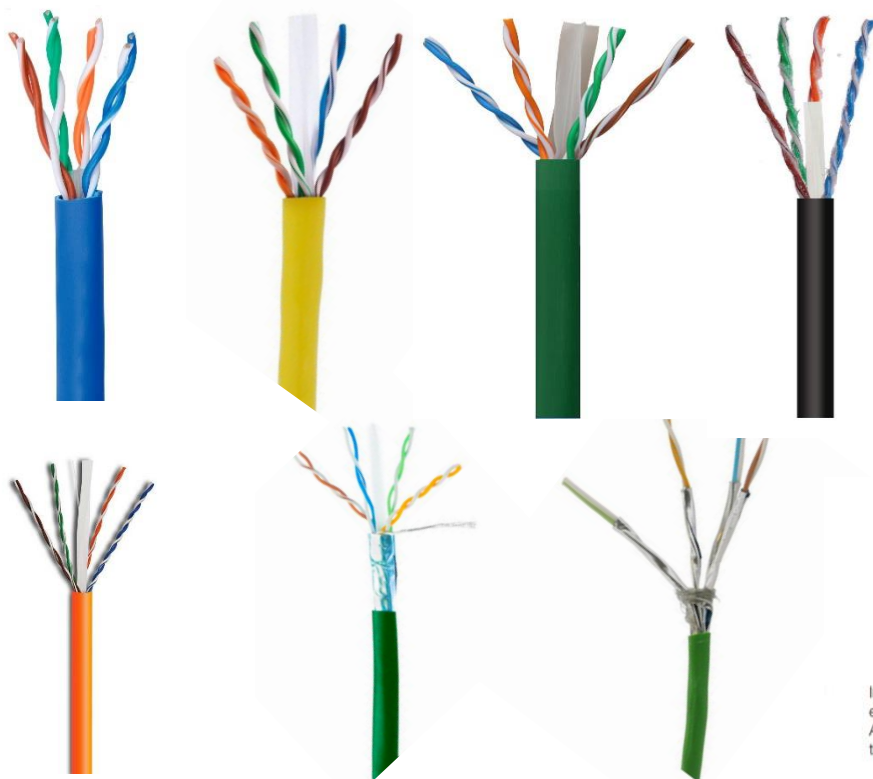
3M/Corning structured cabling infrastructures go wherever a local area network is required – offices, hospitals, military sites, schools and universities - and can support standard data and telephony as well as applications requiring higher bandwidths, such as data storage, video streaming and security. For further technical support, data sheets or general information, please contact 3M/Corning (details on back cover) or visit us at [www.Lcp.co.nz](http://www.Lcp.co.nz)



## 3M/Corning Volition Copper Solutions

### Copper Cables

3M/Corning Copper Cable is available in types ranging from Cat. 3 to Cat. 7, making it easy to use in any application. It is provided in various fire ratings. The construction of the 4-pair copper wire meets high-performance specifications and has length markings along the cable sheath, enabling you to keep track of your cable lengths. The cable is shipped in lengths of 305-500M and available in different Colors.



Item Number	Description
3MC-C6UTP-BLU	3M Cat6 U/UTP 4 Pair 23 AWG PVC Blue Cable 305M
3MC-C6UTP-YELL	3M Cat6 U/UTP 4Pair 23 AWG PVC Yellow Cable 305M
3MC-C6UTP-GRN	3M Cat6 U/UTP 4 Pair 23 AWG PVC Green Cable 305M
3MC-C6UTP-EG	3M Cat6 U/UTP External Gel filled PE Black cable 500M
3MC-C6AFTP-GRN	3M Cat6A F/UTP Shielded LZSH Green Cable500M
3MC-C7SFTP-GRN	3M Cat7 S/FTP Shielded LZSH Green Cable 500M

# CORNING

# 3M

[WWW.LCP.CO.NZ](http://WWW.LCP.CO.NZ)

## Patch Panels

### **3M/Corning Volition 24/48 Port unloaded Patch Panel**



Colors Labeling Caps

Part of the 3M/Corning Keystone product range, the 3M Volition Classic Unloaded Patch Panels are modular and provide a precise yet stylish presentation of the Keystone jacks. The patch panel is available in 24-port (1U) and 48-ports (2U) versions. The Patch Panels accepts Unshielded and Shielded Jacks.



### **3M/Corning Volition™ RJ45 Cat.6/5e 110-IDC Patch Panel**

The Volition™ Category 6/5e 110-IDC Patch Panel is the 3M/Corning version of the popular punch-down termination style patch panels with many additional features and improvements. The patch panel is available in 24-port (1U) and 48-ports (2U) versions.

**Unloaded Patch Panel Fits Cat6, Cat6A & Cat7 Keystone Jacks**

Item Number	Description
3MC-PPC-24U	3M Volition 24 Port unloaded Patch Panel
3MC-C6110PP-24	3M Volition 24 Port 110 Loaded Patch Panels
60010-4	12 Port Wall Mount Unloaded Patch Panels
3MC-PPCAP-Colors	3M Colors Labeling Caps for Patch Panel





## RJ45 Keystone Jacks

### 3M/Corning Cat6 RJ45 UTP Shuttered Toolless Jacks



The Cat6 range is the 3M Permanent Link solution, meeting ISO/IEC 11801. EN50173 and ANSI/TIA/568. C.2 with clip-in mounting. These jacks are core products in our system solution, which includes a comprehensive range of modular patch panels, sockets, faceplates, and patch cords.

### 3M/ Corning Cat6 RJ45 UTP 110 Keystone Jacks



The Category Cat 6 110 Modular Jack is part of the Volition™ Network solution, offering superior performance over Cat.6 link standards. The RJ-45 Modular Jack Series provides an innovative and cost-effective approach to meet the Cat 6 UTP requirements. This series has a keystone mounting format.

### 3M/Corning Cat6A RJ45 STP 10GB Shuttered Toolless Straight & 3 Entry Jacks



The new Cat6A RJ45 Jack is a key component of the Volition Category 6A ISO/IEC, EN AND TIA standards for hardware performance, confirmed by multiple independent lab certifications (Delta and GHMT PVP). It's top-class electrical performance guarantees consistently high headroom at any link length, down to 3M links. Jacks Available in Straight and 3 cable Entry Options.

Item Number	Description
3MC-C6JUTP-W/3MC-C6JUTP-BLK	3M/Corning Cat6 Shuttered Toolless White/Black Jacks
3MC-C6J110T-W/3MC-C6J110T-BLK	3M/Corning Cat6 110 Quick Crimp White/Black Jacks
3MC-C6AJSTP-1E	3M/Corning Cat6A Shielded 10GB 1 Entry Jacks
3MC-C6AJSTP-3E	3M/Corning Cat6A Shielded 10GB 3 Entry Jacks
3MC-CTOOL-110	3M/Corning Quick Crimp Tool for 3MC-C6J110-W/B



## Keystone Clips & Blanks



3M/Corning offers Colored Keystone Clips for Face Plates and Patch Panels.

- Available in 6 colors
- Fits into PDL 600 Series Face plates
- Fits most keystone jacks
- Blanks available un-used ports for Patch panels and Face plates
- Identifies different services (phone, data, alarm, uplinks etc...)
- Can be used for different areas of Business or Floors
- Excellent and efficient for troubleshooting
- Easily changeable, no need to change Jacks
- HPM, Clipsal Clips are also available.

## 3M Cable Management Solution



Item Number	Description
3MC-KCPDL-XX	3M/Corning Volition Keystone Clips for Toolless Jacks
3MC-KCPDL110-XX	3M/Corning Volition Keystone Clips for MKC619 Series Jacks
3MC-0300-XX	3M/Corning Volition Blanks for Patch Panels and Face Plate
3MC-CMH5H-1U	3M/Corning Volition Management Bar Metal 1U
CAB-HCM1U-R	Cable Management bar 1U Recessed
CAB-HCM1U-F	Cable Management bar 1U Finger Duct

## IP67 Data Outlet Solution



## 3M/ Volition IP67 Copper Outdoor Solution

3M launches a complete IP67 solution for your RJ45 connections. Easy to use, it enables you to reach an IP67 protection. 3M enlarges its Keystone Category 5e, 6 & 6A portfolio with watertight and dust protection receptacles. An optional cap enables to protect the connectivity receptacle when not in use. A shell is also proposed: it can fit any patch cord.

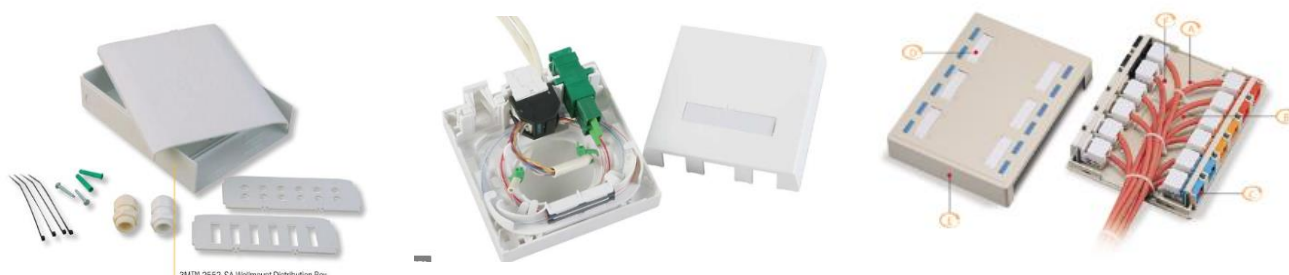
The Keystone IP67 is composed of:

- the Keystone connector,
- the IP67 receptacle
- the sealing
- the fixing nut

The category 6 Keystone connector is available in 3 different versions:

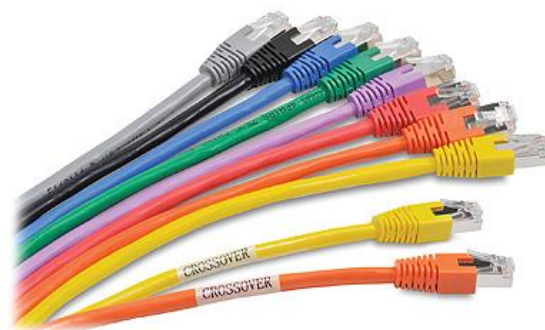
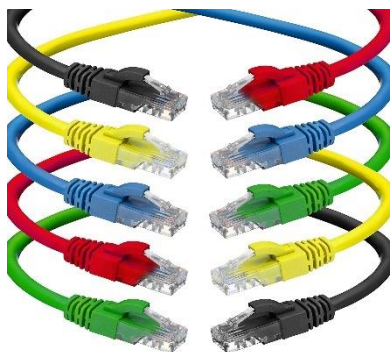
- UTP, FTP shielded with 360°braid or foil connection.

## 3M/Corning Outlet Boxes



Item Number	Description
3MC-IP67-KIT	3M/Corning IP67 Copper Outlet for Cat6 & Cat6A with Box
3MF-B2552-SA	3M/Corning Box for Copper Outlet takes 8 Keystone Jacks
3MF-B8686	3M/Corning Copper Outlet accepts Rj45 Jacks & Fibre Adapters
3MC-MUTO-12 KYSTN	3M/Corning 12 Port Box accepts 1 2 x Keystone Jacks

## Patch Cords UTP & STP



3M /Corning Copper patch cords help enable you to complete your network to Cat.6 according to ANSI/TIA 568-C.2 and Class E ISO 11801/EN 50173-1. They are constructed with UTP stranded cable, low-smoke, zero-halogen (LSZH™) or PVC jacket and protected latch to ensure durability. These patch cords are available in a variety of lengths and Colors for easy cable management and administration.

### 3M/Corning Scotchmate Velcro 12 & 19mm



Item Number	Description
60020-XX	Cat6 UTP Patch Leads, Available in Different lengths and Colors
60020-XA	Cat6A STP Patch Leads, Available in Different lengths and Colors
3MC-V12 /19	3M/ Corning Velcro 12 and 19MM 50 Yards Long



## 3M/Corning Scotchlok™ Butt Connectors



3M/Corning Scotchlok™ Butt Connector UR the Scotchlok UR connector accepts two or three solid copper conductors for butt splicing. The connector is filled with a sealant to provide moisture resistance.

3M/Corning Scotchlok™ Butt Connector UY the small size of the Scotchlok UY connector reduces the splicing bundle O.D. to a minimum. The connector's two ports accept two solid copper conductors. The connector is fill.

3M/Corning Scotchlok™ Self-Stripping dropwire Connector 557TG2 Use the Scotchlok 557TG2 aerial dropwire connector to electrically connect two solid copper conductors, insulate the connection and provide moisture protection.

## 3M™ 710 Splicing System



3M™ 710 Straight Connectors  
3M710-SC1-25



3M™ 710 Straight/Half-Tap Connectors  
3M710-SD1-25



3M™ 710 Bridge Connectors  
3M710-BD1-25

Straight Connectors Used for making a straight or through splice. A full plastic “skirt” protects cut conductor ends from moisture attack.

Straight/Half-Tap Connectors Permit the joining of two cables (straight splice) or one cable to through cable conductors without interruption of service (half-tap splice). One connector therefore does the job of two, reducing your connector inventory requirements.

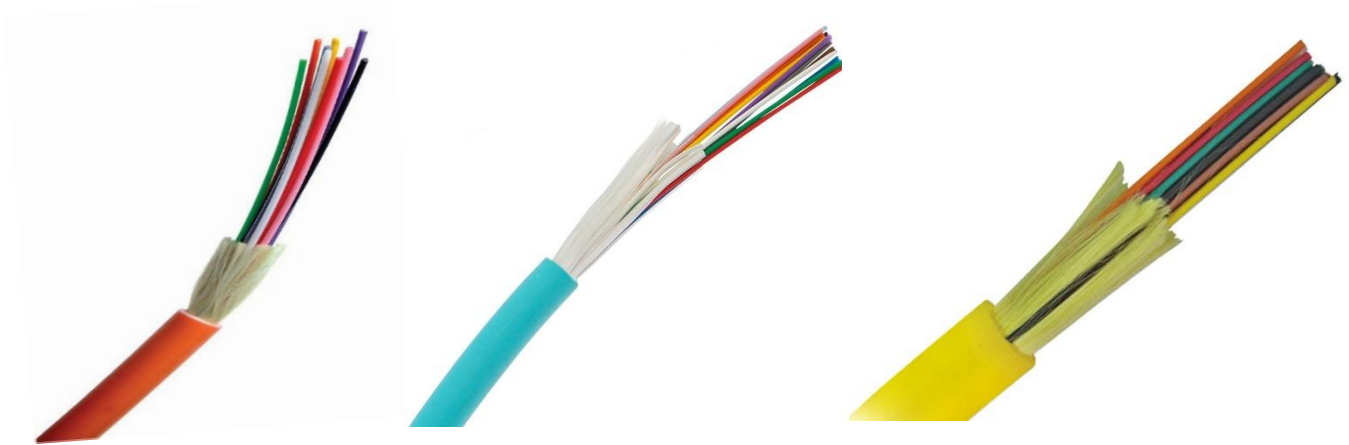
Bridge Connectors Exposed contact elements are accepted by either a straight or half-tap module for bridging applications.

Item Number	Description
80-6113-2759-6	UR2 26-19 AWG Butt Connector, available in 100,500&1000 Pcs Packing
80-6113-2772-9	UY 26-22 AWG Butt Connector, 2 conductors, available in 100,500&1000 Pcs Packing
80-6113-2207-6	557-TG2 Self stripping drop wire butt connector 500 per bag
80-6113-1406-5	E-9J Crimping tool, compatible with all butt and tap connectors except UDW2, U1R, U1B
3M710-SCL-25	Splice module, full skirt body, 22 ga. index strip, cap – encap 22-24AWG
3M710-TC1-25	Splice module, half-tap body, standard index strip, cap – encap
3M710-BC1-25	Bridge module, bridge body, solid cap – encap



## 3M/Corning Volition Fibre Optic Solutions

### Distribution Indoor Cable (Tight Buffering), Fibre Count 2 to 144



3M/Corning indoor cables can be deployed indoor as building backbone cabling as well as for the cabling between floor distributors. The tight-buffered construction facilitates easier termination for low-Fibre-count applications in the local area network (LAN) and eliminates need for fan-out kits.

### Distribution Outdoor Cable (Loose Tube), Fibre Count 2 to 144 (PE & Nylon Jacket)



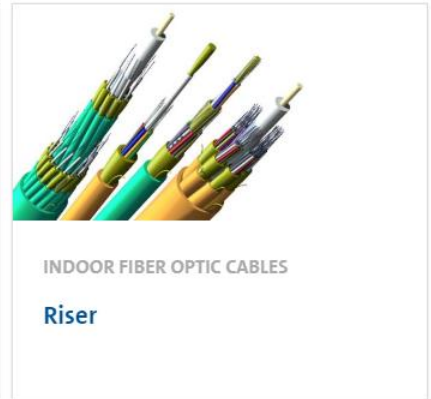
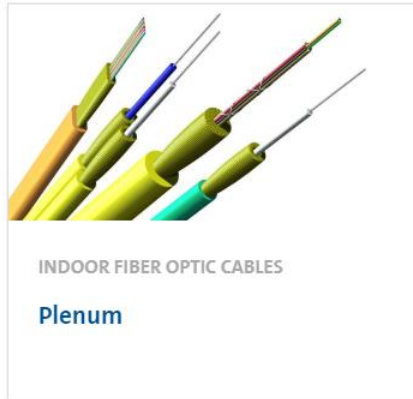
The Outdoor Non-Armored Cable, PE Sheath Loose Tubes cables are manufactured from high strength, low shrinkage PBT Compound, contains a thixotropic jelly, to prevent water penetration and protect the fibres against shock. Fibre Color sequence is defined in the below table. For intermediate fibre counts Black PE Fillers are substituted for loose tube where necessary to retain the cable shape

The loose tube Nylon Jacket cables are designed for outdoor use in duct or direct burial installation. The loose tube design features Gel filled buffer tubes arranged around a dielectric central strength member, with dry water-blocking materials bound inside a polyethylene sheath with blue nylon outer jacket as the standard option

# Corning Special Fibre Optic Cables

## Indoor Fibre Optic Cables

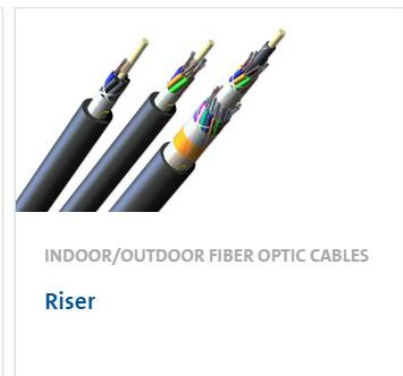
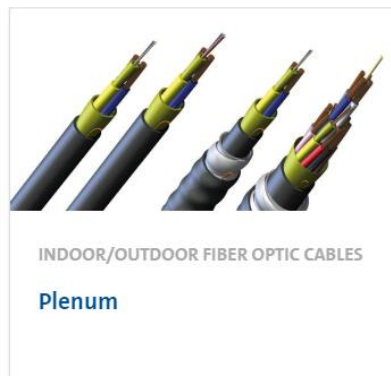
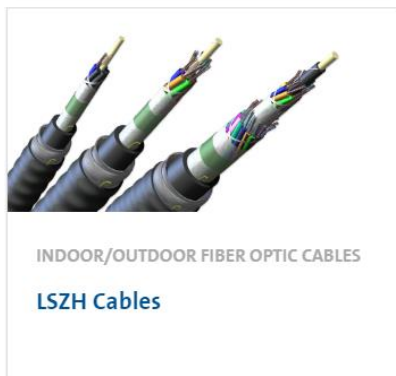
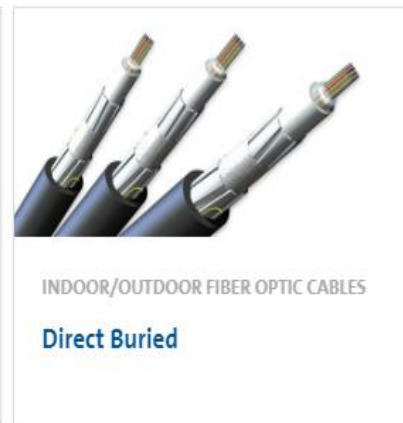
These cables are used exclusively within buildings and must have a flame-retardant jacket to fit this purpose



For More information please visit to [WWW.LCP.CO.NZ](http://WWW.LCP.CO.NZ) or click on below link  
<https://www.lcp.co.nz/pages/productsdetail/619/Corning-Fibre-Optic-Indoor-Cables>

## Indoor/Outdoor Fibre Optic Cables

These are cables that are designed to meet both the rigorous environment of the outdoors but also can be routed indoors, where flame rating requirements also apply.

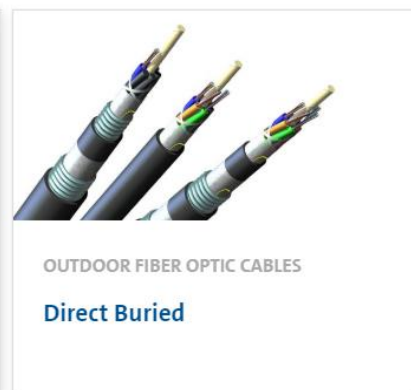
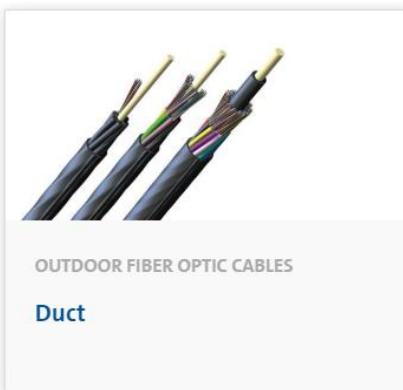
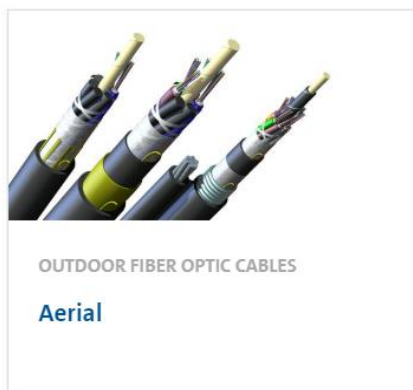


For More information please visit to [WWW.LCP.CO.NZ](http://WWW.LCP.CO.NZ) or click on below link  
<https://www.lcp.co.nz/pages/productsdetail/632/Corning-Fibre-Optic-Indoor/Outdoor-Cables>

## Corning Special Fibre Optic Cables

### Outdoor Fibre Optic Cables

Cables for outdoor applications are engineered to withstand the more demanding conditions seen outside, from environmental extremes to mechanical forces.



For More information please visit to [WWW.LCP.CO.NZ](http://WWW.LCP.CO.NZ) or click on below link  
<https://www.lcp.co.nz/pages/productsdetail/633/Corning-Fibre-Optic-Outdoor-Cables>

Item Number	Description
3MF-FCDOM1- XX	3M/Corning D-series TB indoor/outdoor OM1 62.5/125um Cable 2-144 Fibre
3MF-FCDOM2-XX	3M/Corning D-series TB indoor/outdoor OM2 50/125um Cable 2-144 Fibre
3MF-FCDOM3-XX	3M/Corning D-series TB indoor/outdoor OM3 50/125um Cable 2-144 Fibre
3MF-FCDOM4-XX	3M/Corning D-series TB indoor/outdoor OM4 50/125um Cable 2-144 Fibre
3MF-FCDSM-XX	3M/Corning D-series TB indoor/outdoor SM 09/125um Cable 2-144 Fibre
3MF-FCLTOM3-PE-XX	3M/Corning Loose Tube Outdoor OM3 50/125um PE Jacket 2-144 Fibre
3MF-FCLTSM-PE-XX	3M/Corning Loose Tube Outdoor SM 09/125um PE Jacket 2-144 Fibre
3MF-FCLTOM3-NY-XX	3M/Corning Loose Tube Outdoor OM3 50/125um PE Nylon 2-144 Fibre
3MF-FCLTSM-NY-XX	3M/Corning Loose Tube Outdoor SM 09/125um PE Jacket 2-144 Fibre

For ordering information on Special Corning Fibre Optic cables, please email us on  
[Sales@Lcp.co.nz](mailto:Sales@Lcp.co.nz)



CORNING

[WWW.LCP.CO.NZ](http://WWW.LCP.CO.NZ)

3M



## **Fibre Optic 1U Laser Protected Fibre Tray- Patch Panel**



3M/Corning Volition patch panels are universal Fibre optic patch panels with a sliding tray, available in 18 to 36 port versions. This panel is fitted with a hinged front cover to provide added protection from potentially harmful laser light emitted from optical Fibre systems.

The internal panel and inserts are interchangeable for different port count and connector formats and is suitable for central office, data centre and local area network applications.

## **Closet Connector Housings (CCH)**

(CCH) Designed based on thousands of hours of customer feedback, Corning closet connector housings (CCHs) offer more than two dozen innovative features that make installation and troubleshooting of Fibre optic connectivity faster, easier and more cost-effective. From Fibre and cable routing and strain-relief to port labeling and termination,



# CORNING

[WWW.LCP.CO.NZ](http://WWW.LCP.CO.NZ)

# 3M



## Corning Splice Cassettes & Panels



CCH splice cassettes enable fast field termination and easy modular management of connectivity within the housing.

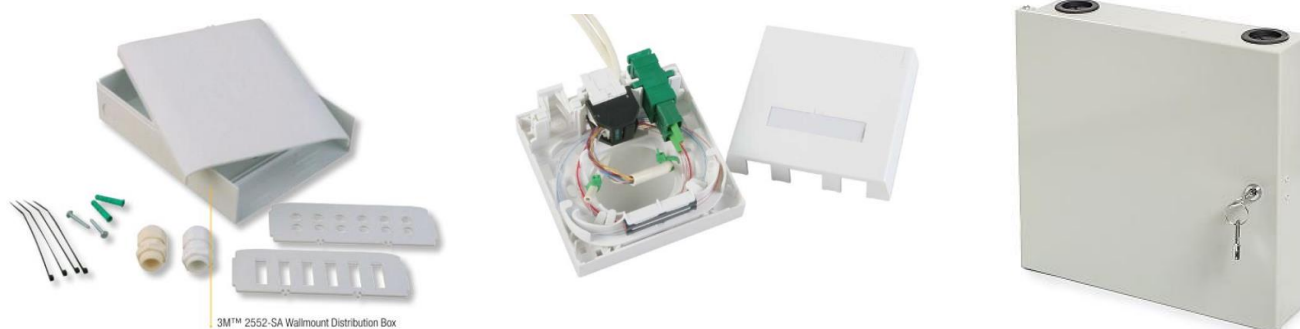
The CCH splice cassette supports fusion splicing of individual or ribbon Fibres, with heat-shrinks, pigtail slack and cable slack managed within a single space-saving footprint.

## Corning Fibre Optic Panels



Corning closet connector housing panels (CCH-CP) are offered in a variety of Fibre counts for use with LANscape® solutions hardware products for a “one-size-fits-all” approach.

## Fibre Optic Termination boxes



Item Number	Description
3MF-PP3SLOT-LP	3M/Corning Fibre Optic Lase Protector Patch Panel/Splice Tray 1U
3MF-B2552-SA	3M/Corning Fibre Optic Wall Mount Termination Box
3MF-8686-	3M/Corning Fibre Optic Wall outlet 8686 for Fibre and RJ45 Keystone
FB-6SCD-12	Fibre Optic Termination Box available in LC & SC Plates

For ordering information on Special Corning CCH, please email us on [Sales@Lcp.co.nz](mailto:Sales@Lcp.co.nz)

### 3M/Corning Fibrelok 2529 Universal Mechanical Splice



The 3M/Corning Fibrelok™ II Universal Optical Fibre Splice 2529 is designed to easily splice any combination of 250 or 900 µm coated Fibres with inexpensive tooling and no electrical power.

### 3M/Corning NO Polish Connectors (LC, SC, ST&FC)



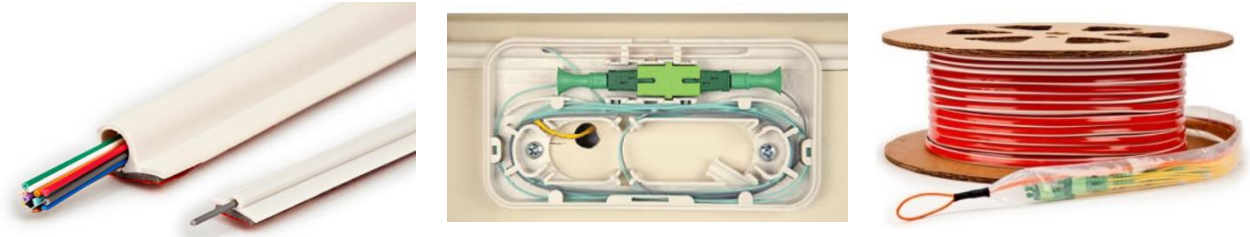
3M/Corning No Polish Connectors help enable fast, on-site installation of 250 µm and 900 µm single mode and multimode Fibre utilizing a one-piece, pre-assembled design that eliminates field polishing and loose parts.

It is ideal for FTTP drop terminations as well as LAN structured cabling backbone, and Fibre-to-the-enclosure applications. With a factory-polished ferrule assembly and a mechanical splice, the connector can be quickly installed - without electrical power - using a simple field tool.

Item Number	Description
3MF-MS2529S	3M /Corning Universal 2529 Mechanical Splice
3MF-MS2539	3M /Corning Universal 2529 Mechanical Splice with Holder & Tools
3MF-NPT8865-C	3M/Corning Mechanical Splice Termination Kit with Cleaver
3MF-NP6800SC-OM1	3M/Corning Fibre Optic SC OM1 62.5/125um Connector
3MF-NP6800SC-OM3	3M/Corning Fibre Optic SC OM3 50/125um Connector
3MF-NP8800SC-SM	3M/Corning Fibre Optic SC SM 9/125um Connector
3MF-NPA8800SCA-SM	3M/Corning Fibre Optic SC SM 9/125um Connector
3MF-NP6830LC-OM3	3M/Corning Fibre Optic LC OM3 50/125um Connector
3MF-NP8830LC-SM	3M/Corning Fibre Optic LC SM 9/125um Connector
3MF-NPT8865-C	3M/Corning Fibre Optic No Polish Connector Termination Kit with Cleaver

## **3M/Corning Passive Optical LAN Solutions**

### **3M/Corning One Pass Fibre Pathway Solutions**



3M/Corning One Pass Fibre Pathway is a horizontal cable pathway and single mode Fibre distribution solution installed simultaneously in one pass on the wall just below the ceiling.

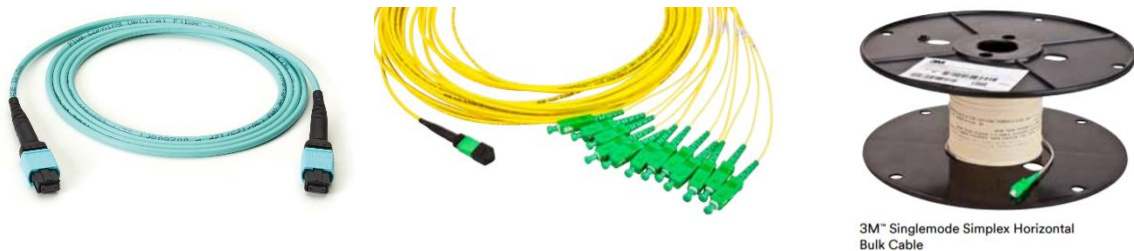
Utilizes 3M/Corning adhesive technology to adhere duct to wall.

Compatible with a variety of wall surfaces.

Available in a variety of lengths and pre-loaded with 6 or 12 Fibres.

Factory terminated at one end with MPO connector (1 or 75-foot pigtail) or SC/APC fanout.

### **3M/Corning Pre-terminated Trunk Cables**



Tight Bend Single Mode Multi-Fibre Pre-Terminated Trunk Cables

- 8 or 12 Fibre MPO to MPO or 8 or 12 Fibre MPO to SC/AP
- Provide quick and easy installation between floors or from floor distributor to the horizontal zone area distribution
- Indoor Plenum Cable

Indoor Low Smoke Zero Halogen Cable

- 7.5 mm bend radius Fibre



### **3M/Corning Pre-terminated Horizontal Cables**

Tight Bend Single Mode Fibre Pre-Terminated Horizontal Cable

- Offered in 1 or 2 Fibre, SC/APC terminated on one end or both ends
- Indoor Plenum Cable Indoor Low Smoke Zero Halogen Cable
- 7.5 mm bend radius Fibre



## **3M/Corning Passive Optical LAN Solutions**

### **3M/Corning 1RU Rack-mount Splitter Shelves**

- 19-inch 1RU self-contained splitter shelf assemblies
- Offer easy pay-as-you-grow rack-and-stack configurations
- Use with second Fibre patch panel for cross connect or stand alone for interconnect solution



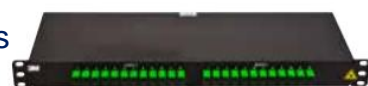
### **3M/Corning Splitter Modules**

- Enables configurations, mix-and-match in configurations with MPO fanout modules
- 1-, 2- or 3-slot-wide splitter modules
- Self-contained, SC/APC pre-connectorized units
- Installs easily into various 3M Fibre enclosure slots
- Use with various 3M enclosures and/or panels



### **3M/Corning Fan-out Shelves - MPO to SC/APC**

- 19-inch 1RU self-contained MPO to SC/APC shelf assemblies
- Easy install for rack and stack configurations
- Optimized for 12 or 24 Fibre increments
- Use with second Fibre patch panel for cross-connect or stand-alone for interconnect switch.



3M™ MPO Fan-out Shelf 8424BK-2MR24CSA

### **3M/Corning Fan-out Modules - MPO to SC/APC**

- One or two slot wide self-contained MPO fan-out modules
- Tool-less installation, fits easily into Fibre enclosure slots
- Use between riser multi-Fibre trunk cable assemblies and horizontal splitters



### **3M/ Corning Wall-mount Boxes for Modules and Adapter Plates**

Wall-mount box for 2,3,4 splitter modules



### **3M/Corning Enterprise Zone Enclosure**

- Use for enterprise open office applications utilizing zone cabling architecture
- Designed for both suspended ceiling and raised floor installations
- Accepts 3M/Corning Splitter Modules and MPO Fan-out Modules
- Includes 3M Rackmount Panel 8422BK-13SLT 19-inch panel for 13-slot wide module mounting



### **3M/Corning Rack-mount Fibre Distribution System Modular in design**

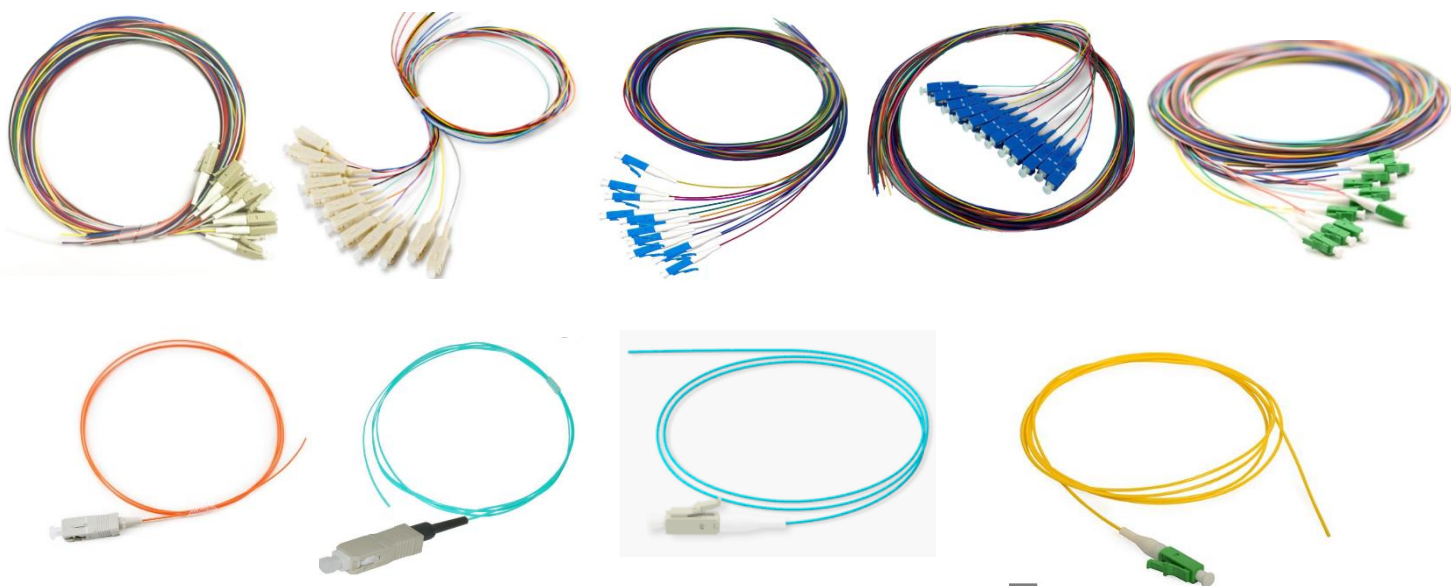
The 3M/Corning Rackmount Fibre Distribution Unit 8400 Series enclosures provide choices in one, two, three or four rack units of space.

- Easy access to rear compartment and jumpers
- Many modular adapter plates available
- Simple installation; less hardware required
- Use with one-, two- or 3-slot MPO and/or splitter modules





## 3M/Corning Fibre Optic Pigtails



3M/Corning Pigtails for Splicing Applications. Available in OM1, OM2, OM3 OM4 & SM Fibre.

Pigtails available in LC, SC, FC, ST & E2000 UPC/APC Connectors.

### Adapters/ Couplers



Item Number	Description
3MF-FPLCOM3K6-2	3M/Corning Volition LC OM3 6 Pack Pigtails 2M
3MF-FPLCOM3K12-2	3M/Corning Volition LC OM3 12 Pack Pigtails 2M
3MF-FPSCOM3K6-2	3M/Corning Volition SC OM3 6 Pack Pigtails 2M
3MF-FPSCOM3K12-2	3M/Corning Volition SC OM3 12 Pack Pigtails 2M
3MF-FPLCOM4K6-2	3M/Corning Volition LC OM4 6 Pack Pigtails 2M
3MF-FPLCOM4K12-2	3M/Corning Volition LC OM4 12 Pack Pigtails 2M
3MF-FPSCOM4K6-2	3M/Corning Volition SC OM4 6 Pack Pigtails 2M
3MF-FPSCOM4K12-2	3M/Corning Volition SC OM4 12 Pack Pigtails 2M
3MF-FPLCSMK6-2	3M/Corning Volition LC SM 6 Pack Pigtails 2M
3MF-FPLCSMK12-2	3M/Corning Volition LC SM 12 Pack Pigtails 2M
3MF-FPSCSMK6-2	3M/Corning Volition SC SM 6 Pack Pigtails 2M
3MF-FPSCSMK12-2	3M/Corning Volition SC SM 12 Pack Pigtails 2M
3MF-FPLCASMK6-2	3M/Corning Volition LCA SM 6 Pack Pigtails 2M
3MF-FPLCASMK12-2	3M/Corning Volition LCA SM 12 Pack Pigtails 2M
3MF-FPSCASMK6-2	3M/Corning Volition SCA SM 6 Pack Pigtails 2M
3MF-FPSCASMK12-2	3M/Corning Volition SCA SM 12 Pack Pigtails 2M
3MF-FPE2000-XX	3M/Corning Volition MM & SM Pigtails

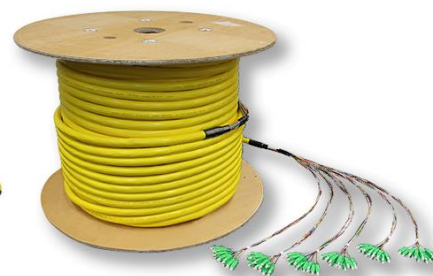
## 3M/Corning Fibre Optic Patch Cords



The Fibre Patch Cords are designed at the factory to meet worldwide specifications. The Patch cords are an integral part of our optical system and manufactured and tested in our factory. They ensure the correct performance of the connection point and of the optical link. The jacket of the cable can be made of PVC or LSOH for different applications.

The patch cords are available with SC, LC, FC, ST & E2000 UPC/APC Connectors in MM & SM. The leads available in different lengths from 0.5 to 150M.

### Fibre Optic Pre-terminated Assemblies



Pre-terminated Fibre optic cable assemblies present an efficient and effective cable deployment option for any size of fibre optic network. High precision factory terminations coupled with exceptional quality cable in a range of construction and styles and fully factory tested terminations ensure peace of mind and rapid deployment.

#### Manufacturing Options

Cable Type	Description	Fibre Count	Oversleeving Sizes (mm)	Jacket Options
Distribution (Dx)	900um tight-buffered distribution cable (sub-grouped 72f+)	2 - 144	2.0, 3.0 (<6f)	LSZH, PVC, Military Tactical Polyurethane
Breakout (Bx)	2.0/2.5mm tight buffered breakout cable	2 - 24	N/A	LSZH, PVC, Military Tactical Polyurethane
Subgroup (Gx)	900um tight buffered, 5.5mm subgroup fibre cable	24 - 144	2.0	LSZH
Micro cable (MC)	250um multicore micro cable	12 - 24	0.9, 2.0	LSZH, Double Jacket
Subgroup micro cable (SMC)	Sub-grouped 250um multicore micro cable	48 - 144	0.9, 2.0	LSZH
Loose Tube (LT)	250um loose tube fibre cable	6 - 144	0.9, 2.0	Nylon, CST, F/GRP, PE Sac Sheath

## Field Deployable Cable Reels



Schill GT310 Field Deployable  
Cable Reel



Schill GT380 Field Deployable  
Cable Reel



Schill HT380 Field Deployable  
Cable Reel



Schill GT450 Field Deployable  
Cable Reel

### Product Description

LCP Field deployable cable reels offer a convenient method for roll-out and retrieval of fibre optic cable assemblies as well as a range of communications cabling. **LCP** offer a range of Field Deployable cable reels) in variety of sizes and constructions.

Hand wound reels offer a simple deployment and retrieval method that allows for patching of cable assemblies without the need to fully unwind the reel. These reels are well suited to the LCP range of harsh environment cable assemblies including expanded beam, multi-channel physical contact and broadcast connectivity.



Cable Reel – 300m



Cable Reel – 500m



Cable Reel – 1000m

LCP Field deployable offer a convenient method for roll-out and retrieval of Fibre optic cable assemblies as well as a range of communications cabling. **LCP** offers a range of cable reels in sizes to suit 300 ,500 and 1000 m cable reel of 6mm OD cable.

Hand wound reels offer a simple deployment and retrieval method that allows for patching of cable assemblies without the need to fully unwind the reel. These reels are well suited to the **LCP** range of harsh environment cable assemblies including expanded beam, multi-channel physical contact and broadcast connectivity.

### Applications:

- Broadcast and television networks
- Defense deployable communications
- Mine site and harsh environment cabling
- Deployable connectivity



## 3M/Corning Fibre Closures

### 3M/Corning Fibre Optic Splice Closures 2178

The 3M™ Fibre Optic Splice Closure 2178 family provides many models and configurations, so you can expand and future-proof your network with compatible, durable technology. Re-enterable designs bring additional ease of ongoing configuration in outside and inside plant environments.



### 3M/Corning Fibre Optic Closure 2179 CD

3M™ Fibre Optic Splice Closure 2179 CD accommodates various splice applications such as express, branch or drop.

Using mechanical sealing technology, the dome seals from base-to-dome preventing ingress and enabling easy re-entry. Plus, the cable ports are designed for use with heat shrink sealing technology for robust protection from the elements.



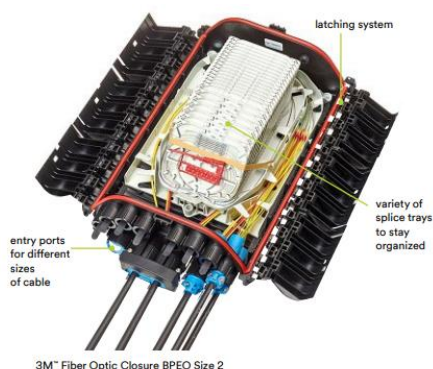
### 3M/Corning Fibre Optic Closure 2179 CM

3M™ Fibre Optic Splice Closure 2179 CD accommodates various splice applications such as express, branch or drop. Using mechanical sealing technology, the dome seals from base-to-dome preventing ingress and enabling easy re-entry. Plus, the cable ports are designed for use with heat shrink sealing technology for robust



### 3M/Corning Fibre Optic Closure BPEO

3M™ Fibre Optic Closures BPEO support evolving Fibre optic networks with modular solutions. Tool-less and fully mechanical, BPEO closures are compatible with the 3M™ External Cable Assembly Module (ECAM) system and can be used with micro-cable. Compatible with multiple drop environments and an excellent choice for manholes and handholes.





# **PROPATCH Structured Cabling Solutions**

## **Company Information:**

LCP Ltd is a Corporate Member of BICSI (Building Industry Consulting Services Incorporate). RCDD Certified Engineer on staff. LCP also visits exhibitions worldwide to bring technological advanced products to our market and customers.

## **About PROPATCH:**

PROPATCH Brand is sold for over 20 Years and accepted in the market as a high quality, superior performance brand and is backed up by 25 Year system performance warranty.

PROPATCH products includes, Copper & Fibre optic cabling products, Cabinet and accessories, and Data Networking equipment such as Switches, Media convertors, POE injectors.

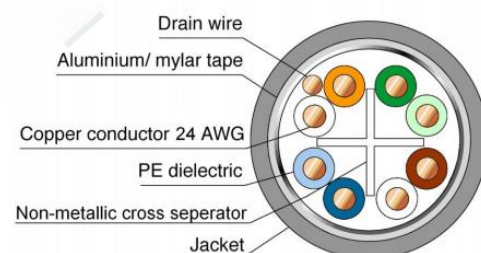
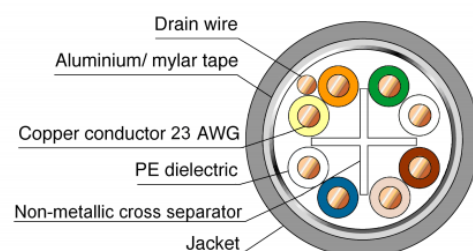
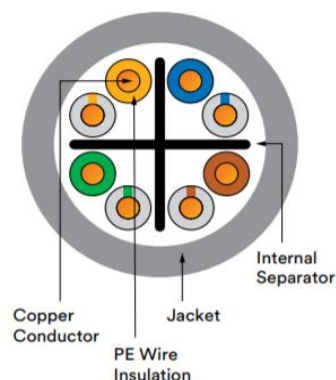
To get the optimum performance out of your network you need a high-performance cabling infrastructure and PROPATCH delivers this platform today and for the future. All PROPATCH products Complies with ANSI/TIA, ISO/IEC 11801 standard.

**Important Notice (POE):** TO Support POE devices, for today and in the future, your cabling infrastructure needs to be of high performance (Type1: 15.4Watts, Type2: 30Watts, Type3:60Watts & Type4:90Watts). PROPATCH Solution Supports these POE devices requirement.



## PROPATCH Copper Cables

**PROPATCH** Copper cables will deliver the best performance when used with RJ 45 Keystone jacks to give highest margins over Category6/Cat6A, Cat7 TIA/EIA 568 and ISO 11801 and EN 50173 Class E & EA standards. The cable sheath has length marking which is easy and convenient for the installer and gives a clear identification of cable and link lengths.



Item Number	Description
60000-4	PROPATCH Cat6 U/UTP 4 Pair 23 AWG PVC Blue Cable 305M
60000-5	PROPATCH Cat6 U/UTP 4 Pair 23 AWG PVC Yellow Cable 305M
60000-2	PROPATCH Cat6 U/UTP 4 Pair 23 AWG PVC Green Cable 305M
60000-7	PROPATCH Cat6 U/UTP 4 Pair 23 AWG PVC Red Cable 305M
60000-8	PROPATCH Cat6 U/UTP 4 Pair 23 AWG PVC White Cable 305M
60000-3	PROPATCH Cat6 U/UTP 4 Pair 23 AWG PVC Orange Cable 305M
60000-4EG	PROPATCH Cat6 U/UTP 4 Pair Gel filled Outdoor PE Black Cable 500M
60000-6	PROPATCH Cat6 F/UTP 4Pair Shielded Outdoor PE Black Cable 305M
60000-4A	PROPATCH CAT6A F/UTP 4 Pair Shielded Green Cable 500M/Drum
70000-4	PROPATCH CAT7 S/STP 4 Pair Shielded Green Cable 500M/Drum

## Patch Panels

**PROPATCH** Patch Panels are modular and provide a precise yet stylish presentation of the Keystone jacks. The patch panel are available in 12 Port Wall Mount version & 19" 24-port (1U). The Patch Panels accepts Unshielded and Shielded keystone jacks as well as Fibre Optic LC, SC Simplex Adapters. White & Black Color Blank are also available to blank the empty Patch Panel Ports.

### 19" 24 Port Unloaded Unshielded & Shielded Patch Panel with back Management Bar



### 12 Port Wall Mount Unloaded Unshielded & Shielded Patch Panel



### Cat6 24 19" Loaded Patch Panel with Back Management



Item Number	Description
60010-1U	PROPATCH 12 Port Unloaded Wall Mount Patch Panel
60010-1STP	PROPATCH 12 Port Unloaded Wall Mount Shielded Patch Panel
60010-4U	PROPATCH 24 Port 19" Unloaded Rack Mount Patch Panel
60010-4	PROPATCH Cat6 24 Port Loaded 110IDC Block Patch Panel
60010-4E	PROPATCH Cat6 24 Port Loaded 110IDC Block PP Economy



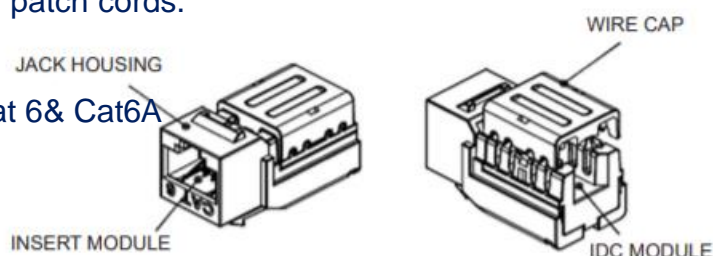
## RJ45 Cat6 & Cat6A Keystone Jacks



The **PROPATCH** Cat6/CAT6A range is the Permanent Link\* solution, meeting ISO/IEC 11801.EN50173 and ANSI/TIA/568 standards. These jacks are core products in our system solution, which includes a comprehensive range of modular patch panels, sockets, faceplates, and patch cords.

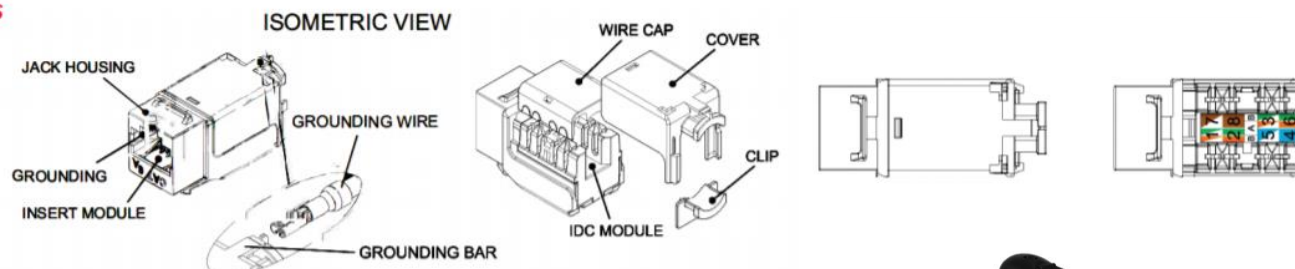
### FEATURES & BENEFITS

- 90° Keystone Jacks available in Cat 6 & Cat6A
- Color coded A-B wiring diagrams



### Cat6A Diagrams

#### DIAGRAMS



### Quick Crimp Termination Tool for Jacks

The **PROPATCH** Quick Crimp termination tool increase termination Speed up to 70%.

The cutting modules are compatible with CAT 3 / 5e / 6 / 6A jacks



Item Number	Description
60001-1	PROPATCH Cat6 UTP Keystone Jack White
60001-2	PROPATCH Cat6 UTP Keystone Jack Black
60001-C6ASTP	PROPATCH Cat6A STP Keystone Jacks
TP-CT6J-UTP/STP	PROPATCH Termination Jacks for Cat6 & Cat6A Jacks

## RJ45 CAT6/CAT6A Modular Plugs



**PROPATCH** offers wide Range of RJ45 Modular Plugs in Cat6 & Cat6A with Inserts and without insert Options

## Keystone Clips & Blanks



PROPATCH-3M offers Colored Keystone Clips for Face Plates and Patch Panels.

- Available in 6 colors
- Fits into PDL 600 Series Face plates
- Fits most keystone jacks
- Blanks available un-used ports for Patch panels and Face plates
- Identifies different services (phone, data, alarm, uplinks etc)
- Can be used for different areas of Business or Floors
- Excellent and efficient for troubleshooting
- Easily changeable, no need to change Jacks
- HPM, Clipsal Clips are also available

Item Number	Description
3MC-KCPDL-XX	3M/Corning Volition Keystone Clips for Toolless Jacks
3MC-KCPDL110-XX	3M/Corning Volition Keystone Clips for MKC619 Series Jacks
3MC-0300-XX(Color)	3M/Corning Volition Blanks for Patch Panels and Face Plate
60011-48	PROPATCH CAT6 110 48 Pair Cross-connect Kit
TP-60011-4P	PROPATCH 4 Pair Termination Tool

## Cable Management Solutions

### Horizontal Management Bars



### Veritable Management Bars



Item Number	Description
CAB-HCM1U	PROPATCH 19" Cable Management bar Metal 1RU
CAB-HCM1U-F	PROPATCH 19" Cable Management bar Finger Duct 1RU
CAB-HCM1U-B	PROPATCH 19" Cable Management bar Brush 1RU
CAB-HCM2U-F	PROPATCH 19" Cable Management bar Finger Duct 2RU
CAB-HCM1U-R	PROPATCH 19" Cable Management bar Recessed accepts large quantity of cables
CAB-VCM-F-XX	PROPATCH Front Profile Management – Comes in 40x40,40x80 sizes
CAB-VCM-S-XX	PROPATCH Side Profile Management – Comes in 40x40,40x80 sizes
CAB-2VCMS	PROPATCH double vertical Cable Management – side profile for 800mm Cabinet comes in 40x40 and 40x80 sizes
CAB-VCMS40160	PROPATCH 40X160 Vertical Cable Management -side profile



## Patch Cords UTP & STP



PROPATCH Copper patch cords help enable you to complete your network to Cat.6 according to ANSI/TIA 568-C.2 and Class E ISO 11801/EN 50173-1. They are constructed with UTP stranded cable, low-smoke, zero-halogen (LSZH™) or PVC jacket and protected latch to ensure durability. These patch cords are available in a variety of lengths and Colors for easy cable management and administration.

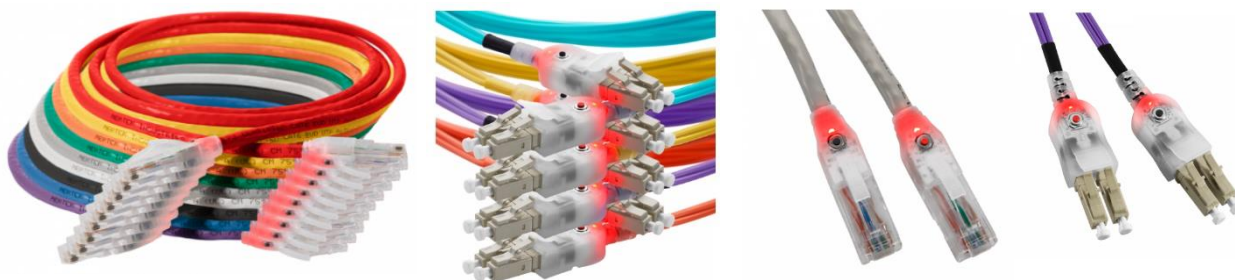
### Velcro 12 & 19mm



Item Number	Description
60020-XX	PROPATCH Cat6 UTP Patch Leads, Available in Different lengths and Colors
60020-XA	Cat6A STP Patch Leads, Available in Different lengths and Colors
PRO-V12.5	PROPATCH Velcro 12.50 MM 45 Yards (41.18M) Long
PRO-V19	PROPATCH Velcro 19MM 45 (41.18) Yards Long

We have Patch Leads available in Different length and Colors, please email us on [Sales@Lcp.co.nz](mailto:Sales@Lcp.co.nz) or Visit to our website for more information.

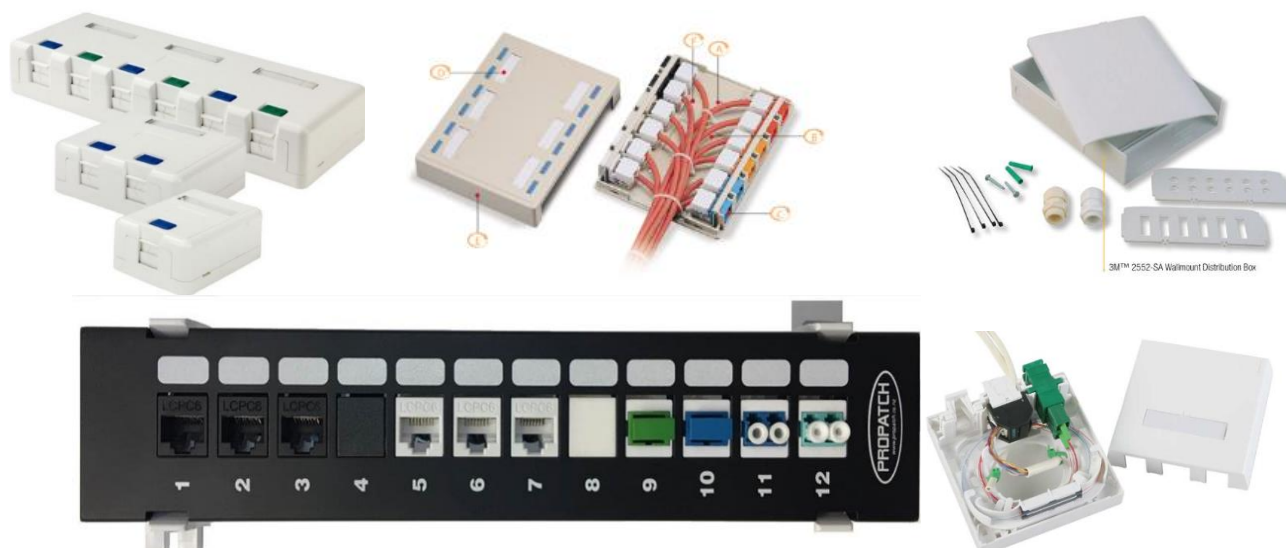
### EVO Self Tracing Copper & Fibre Patch leads



The EVO range of patch cords are revolutionary patented leads that will remove the hand-over-hand tracing of patch leads forever. Saving hours of tracing and confirm the lead before any disconnection occurs. Trace button at each end of the lead with a bright LED flashing light. With a 3V dry cell battery and patented circuit boards in each lead, everything is in-built.

The Leads available in Copper Cat6/Cat6A – Fibre OM3, OM4 & SM in LC Connectors with different lengths.

### RJ45 Copper/Fibre Outlet solutions



**PROPATCH** offers wide range of Wall Mount Data Copper & Fibre Outlets. These outlets are ideal for Small to Medium Size Cabling installations, such as Residential, Apartments, Porta-com and Small offices

Item Number	Description
EVO-C6PL-XX	Evo Cat6 Copper Patch lead (Available in different lengths)
EVO-C6APL-XX	Evo Cat6A Copper Patch lead (Available in different lengths)
EVO-FPL-SM&MM	Evo MM&SM Fibre Patch Leads (Available in different lengths)
3MC-MUTO-12	3M Multimedia box 12 Port for Copper & Fibre
3MF-B8686	3M 8686 Termination Outlet Box for Copper & Fibre
3MF-B2552-S	3M Scotch Termination box for Copper & Fibre
60010-1U	PROPATCH 12 Port Unloaded Patch Panel Wall Mount

## Data outlet Face Plate & Accessories



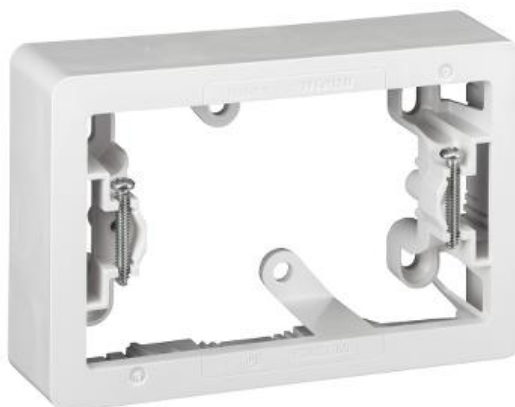
PDL 600 Series Plate



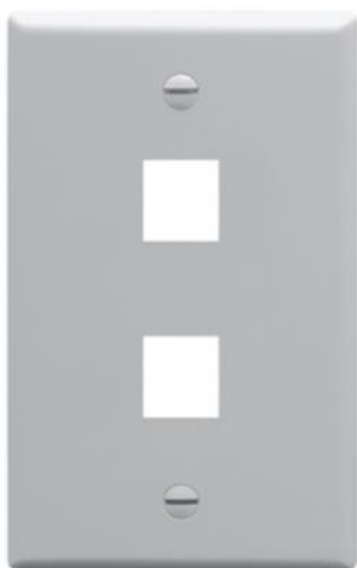
PDL 600 Series Plate with Multicolor Keystone Clips



HPM Face Plate



PDL Mounting Block



PROPATCH Face Plate



PROPATCH Mounting Block



## Data outlet Face Plate & Accessories



**C- Clips**



**Plastic Flush Box**



**Fire Rated Box**

**LCP** offers PDL 600 Series, HPM & PROPATCH Data Outlet Face plates. The Face Plates available in 1, 2,3,4 & 6 Gang in white & Black color. Also, there are 7 colors of Keystone Clips available for PDL plates. White & Black keystone clips available for HPM Plates.

Item Number	Description
PDL681VH	PDL 600 Series Face Plate 1 Gang White
PDL682VH	PDL 600 Series Face Plate 2 Gang White
PDL683VH	PDL 600 Series Face Plate 3 Gang White
PDL684VH	PDL 600 Series Face Plate 4 Gang White
PDL686VH	PDL 600 Series Face Plate 6 Gang White
PDL650VH	PDL 600 Series Blank Plate White
HPM-1VH	HPM Face Plate 1 Gang White
HPM-2VH	HPM Face Plate 2 Gang White
HPM-3VH	HPM Face Plate 3 Gang White
HPM-4VH	HPM Face Plate 4 Gang White
HPM-6VH	HPM Face Plate 6 Gang White
FP-1WHT	PROPATCH Face Plate 1 Gang White
FP-2WHT	PROPATCH Face Plate 2 Gang White
FP-3WHT	PROPATCH Face Plate 3 Gang White
FP-4WHT	PROPATCH Face Plate 4 Gang White
FP-6WHT	PROPATCH Face Plate 6 Gang White
KCPDL-W	Keystone PDL White Clip for 3M Shuttered Toolless Jacks
KCPDL-BLK	Keystone PDL Black Clip for 3M Shuttered Toolless Jacks
KCPDL110-W	Keystone PDL White Clips for Keystone Jacks
KCPDL110-BLK	Keystone PDL Black Clips for Keystone Jacks
KCPDL110-RED	Keystone PDL Red Clips for Keystone Jacks
KCPDL110-GRN	Keystone PDL Green Clips for Keystone Jacks
KCPDL110-ORNG	Keystone PDL Orange Clips for Keystone Jacks
KCPDL110-BLU	Keystone PDL Blue Clips for Keystone Jacks
KCPDL110-YELL	Keystone PDL Yellow Clips for Keystone Jacks
PDL891	PDL Deep Mounting Block
PQC-MB1	PROPATCH MB1 Mounting Block
C-Clip	PROPATCH Mounting C-Clip
PDL144T	PDL Mounting Flush Box Thread
FR-B362	Fire Rated Electrical Single Flush Boxes
FR-SLT300	Fire Rated Sealant 300ML

## Telephone Voice Cables & Accessories

### Cat3 Voice Cables Internal & External Cables



**PROPATCH** CAT 3 Telephone/Data Cables are designed for the connection of telephony and data equipment operating in both analog and digital environments. These cables can be used to distribute telephone and basic data rate signals up to 10Mbps within an office or building. These Cables are available in different Pair counts, 10,15,20,25,30,50&100 Pair.

### Telephone Flat Cables/ Jumper Wires



### Telephone Voice Patch Panels & Krone Type Modules



### **PROPATCH CAT6 110 IDC 48 pair Cross Connect Kit & Tool**

**PROPATCH** 110 48 pair cross-connect Kit provides easy network cabling consolidation Point. It also offers customers a solid backbone for an exceptional structured wiring solution.

#### Features:

- Exceeds industry standards for Category 6 specifications
- 110 Block accepts 22-26 AWG wires
- Designation labels included
- 110 Block comes with Legs
- 4 Pair Termination Tool Available



### **Frames & Boxes for Krone Type Modules**



**PROPATCH** has different types of Frames and Boxes to accept Krone type modules. We can offer 10,20,30,50,100, 110 & 270 Pairs Frames & Boxes.

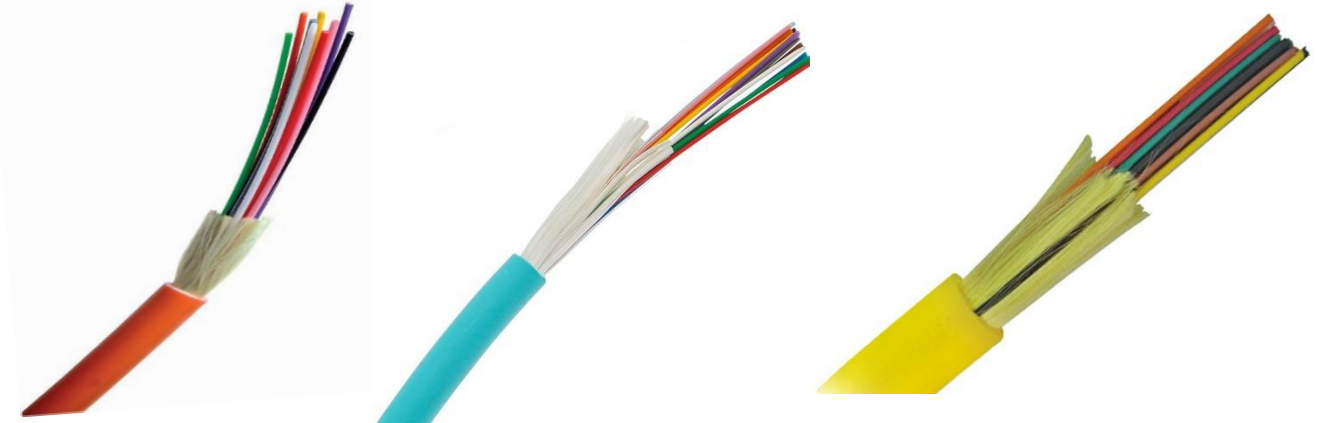
Item Number	Description
10510	PROPATCH Cat3 10 Pair Voice Cable Gel filled Outdoor
10530	PROPATCH Cat3 25 Pair Voice Cable Indoor Dry
10531	PROPATCH Cat3 50 Pair Voice Cable Indoor Dry
10532	PROPATCH Cat3 100 Pair Voice Cable Indoor Dry
10517	PROPATCH Cat3 25 Pair Voice Cable Gel filled Outdoor
10518	PROPATCH Cat3 50 Pair Voice Cable Gel filled Outdoor
10519	PROPATCH Cat3 100 Pair Voice Cable Gel filled Outdoor
30010-25	PROPATCH Cat3 19" 25 Pair Voice Patch Panel
30010-50	PROPATCH Cat3 19" 50 Pair Voice Patch Panel
1001A	PROPATCH 10 pair Disconnect Krone Block Non-Profile
1006A	PROPATCH 10 pair Disconnect Krone Block Profile
1010A	PROPATCH 10 Pair Earth Module
104ID	PROPATCH 10 Pair Lightning Protection Module
1064	PROPATCH 50 Pair Disconnect Box & Frame
1066	PROPATCH 100 Pair Disconnect Box and Frame



## PROPATCH Fibre Optic Solutions

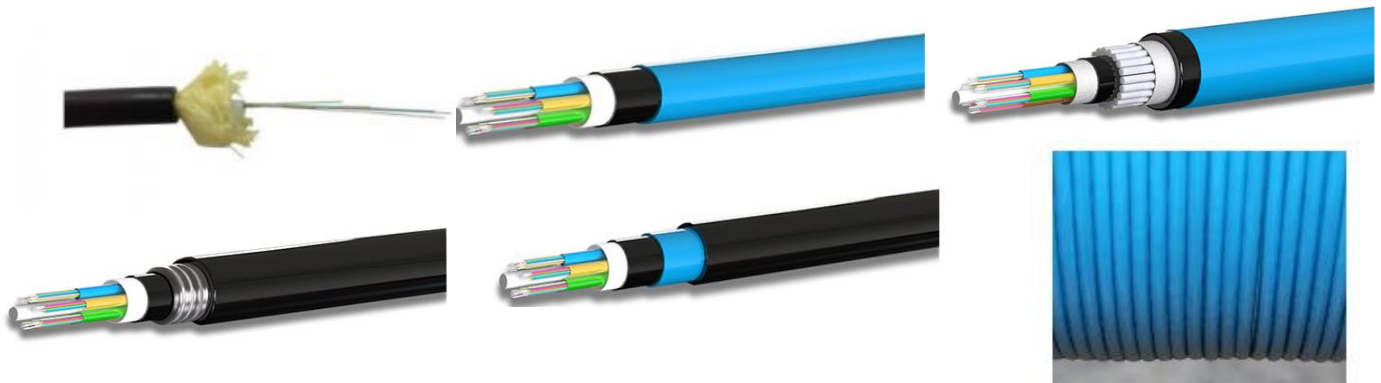
### Fibre Optic Indoor Cables

#### Distribution Indoor Cable (Tight Buffering), Fibre Count 2 to 144



**PROPATCH** indoor cables can be deployed indoor as building backbone cabling as well as for the cabling between floor distributors. The tight-buffered construction facilitates easier termination for low-Fibre-count applications in the local area network (LAN) and eliminates need for fan-out kits.

#### Distribution Outdoor Cable (Loose Tube), Fibre Count 2 to 144 (PE & Nylon Jacket)



Loose tube fibre cable is the most utilized family of fibre optic cables for outdoor and long run telecommunication networks. It is ideally suited for outdoor environments where extreme environmental conditions play a major role in cable selection. Gel filled tubes offer protection for the fibres in wide operating temperatures. Armored cables prevent damage from rodents, termites and physical damage. Constructed with layers of densely packed tubes of 250-micron fibre allow for high fibre counts in compact cable diameters. Utilizing an S-Z arrangement of tubes wrapped around a central strength member.

**PROPATCH** offers MM & SM loose tube cable in:

- PE & Nylon jacket for standard installations
- Sacrificial sheath for heavily termite infested areas
- Fibreglass armoured for protection from non-burrowing rodents
- Corrugated steel tape armoured for protection from a wide range of environmental factors

## **PROPATCH Military & Specialty Cable**



**PROPATCH** Military, Specialty Fibre Optic Cables & specialty cable range encompasses cable types such as military tactical grade, aerial self-supporting cable (ADSS), fire rated cable and other uncommon cable types suitable for specific network or environmental requirements. Our range of specialty cable is tried and tested in a range of challenging environments and suitable when standard cable isn't enough.

**PROPATCH** offers a range of specialty cable types:

- Military distribution and breakout cable for deployable cabling requirements and harsh environment connectivity.
- Aerial self- supporting cable for overhead fibre wiring
- Fire rated cabling for fire prone areas
- Hybrid fibre cables and other armoured fibre cables available

<b>Item Number</b>	<b>Description</b>
FC-DOM1- XX	<b>PROPATCH</b> D-series TB indoor/outdoor OM1 62.5/125um Cable 2-144 Fibre
FC-DOM2-XX	<b>PROPATCH</b> D-series TB indoor/outdoor OM2 50/125um Cable 2-144 Fibre
FC-DOM3-XX	<b>PROPATCH</b> D-series TB indoor/outdoor OM3 50/125um Cable 2-144 Fibre
FC-DOM4-XX	<b>PROPATCH</b> D-series TB indoor/outdoor OM4 50/125um Cable 2-144 Fibre
FC-DSM-XX	<b>PROPATCH</b> D-series TB indoor/outdoor SM 09/125um Cable 2-144 Fibre
FC-LTOM3-PE-XX	<b>PROPATCH</b> Loose Tube Outdoor OM3 50/125um PE Jacket 2-144 Fibre
FC-LTSM-PE-XX	<b>PROPATCH</b> Loose Tube Outdoor SM 09/125um PE Jacket 2-144 Fibre
FC-LTOM3-NY-XX	<b>PROPATCH</b> Loose Tube Outdoor OM3 50/125um Nylon 2-144 Fibre
FCLTSM-NY-XX	<b>PROPATCH</b> Loose Tube Outdoor SM 09/125um Nylon Jacket 2-144 Fibre

Please contact us for More Information or Visit to our website on [WWW.LCP.CO.NZ](http://WWW.LCP.CO.NZ)

## Fibre Optic Patch Panels/Trays

### Sliding 1 & 2 RU Fibre Trays



### Fixed Type Fibre Tray



### Swingout/Rotary Fibre Tray





## Fibre Optic Termination boxes



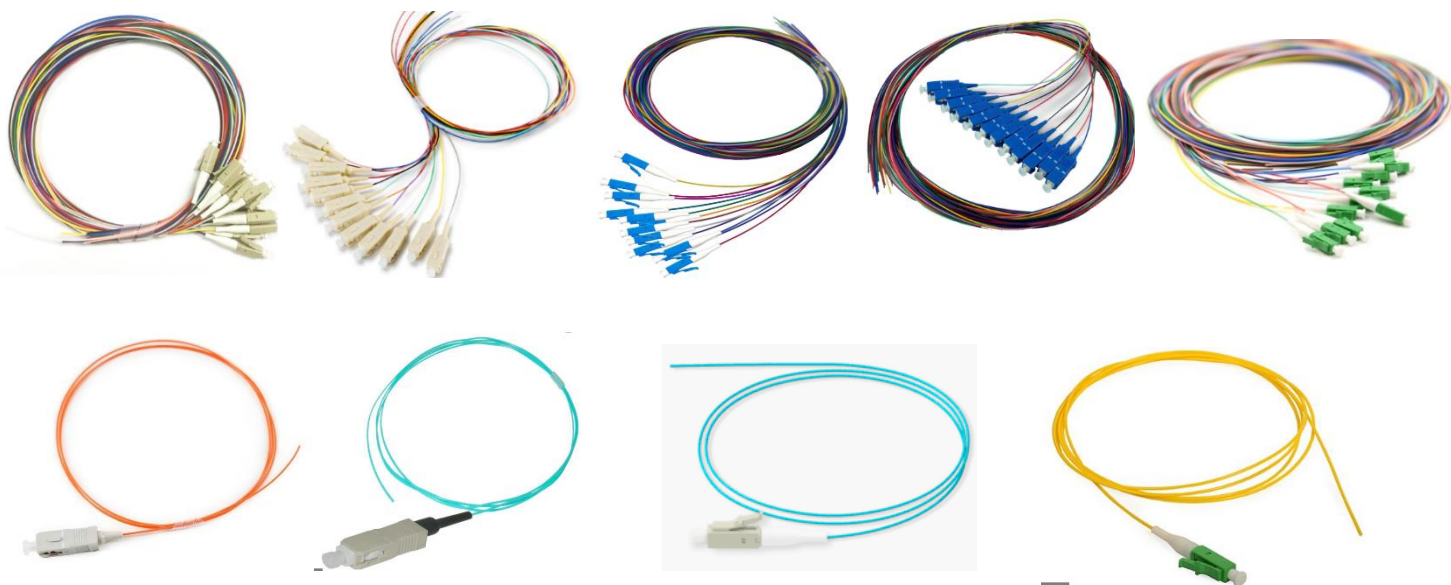
### Adapters/Couplers:

**PROPATCH** offers wide range of Adapters In Multi-mode & Single mode. We have Adapters available in LC, SC, FC, ST & E2000 Series. These Adapters come in UPC (Blue) and APC (Green) options.



Item Number	Description
FTS-PP-1U-19"	Fibre Optic Tray Sliding 1U 19" Patch Panel Black
FTS-PP-2U-19"	Fibre Optic Tray Sliding 2U 19" Patch Panel Black
FT-F1U2P	Fibre Optic Fixed Tray 1RU 19" Patch Panel
FTSO-1U-12	Fibre Optic swing-out patch panel 19"
FB-6SCD-12	Fibre Optic 12 Core Splice Box Metal with Lock
FB-FTTH-2SCS	Fibre Optic 2 Cores FTTH Box without Adaptor
FB-FTTH-4SCS	Fibre Optic 4 core FTTH box accept 4x SC Simplex & LC Duplex Adaptor
3MF-B2552SAFP	3M Scotch Fibre Optic Splice Box, comes with LC,SC,ST& FC Plates
3MF-B8686	3M Scotch 8686 Box for Fibre & Copper RJ45 Jacks

## Fibre Optic Pigtails



PROPATCH Pigtails for Splicing Applications. Available in OM1, OM2, OM3 OM4 & SM Fibre.

Pigtails available in LC, SC, FC, ST& E2000 UPC/APC Connectors.



Item Number	Description
FP-LCOM3K6-2	PROPATCH Fibre Optic LC OM3 6 Pack Pigtails 2M
FP-LCOM3K12-2	PROPATCH Fibre Optic LC OM3 12 Pack Pigtails 2M
FP-SCOM3K6-2	PROPATCH Fibre Optic SC OM3 6 Pack Pigtails 2M
FP-SCOM3K12-2	PROPATCH Fibre Optic SC OM3 12 Pack Pigtails 2M
FP-LCOM4K6-2	PROPATCH Fibre Optic LC OM4 6 Pack Pigtails 2M
FP-LCOM4K12-2	PROPATCH Fibre Optic LC OM4 12 Pack Pigtails 2M
FP-SCOM4K6-2	PROPATCH Fibre Optic SC OM4 6 Pack Pigtails 2M
FP-SCOM4K12-2	PROPATCH Fibre Optic SC OM4 12 Pack Pigtails 2M
FP-LCSMK6-2	PROPATCH Fibre Optic LC SM 6 Pack Pigtails 2M
FP-LCSMK12-2	PROPATCH Fibre Optic LC SM 12 Pack Pigtails 2M
FP-SCSMK6-2	PROPATCH Fibre Optic SC SM 6 Pack Pigtails 2M
FP-SCSMK12-2	PROPATCH Fibre Optic SC SM 12 Pack Pigtails 2M
FP-LCASK6-2	PROPATCH Fibre Optic LCA SM 6 Pack Pigtails 2M
FP-LCASK12-2	PROPATCH Fibre Optic LCA SM 12 Pack Pigtails 2M
FP-SCASK6-2	PROPATCH Fibre Optic SCA SM 6 Pack Pigtails 2M
FP-SCASK12-2	PROPATCH Fibre Optic SCA SM 12 Pack Pigtails 2M
FP-E2000-XX	

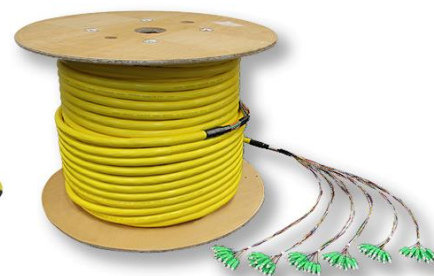
## Fibre Optic patch Leads



**PROPATCH** Fibre Patch Cords are designed at the factory to meet worldwide specifications. The Patch cords are an integral part of our optical system and manufactured and tested in the factory. They ensure the correct performance of the connection point and of the optical link. The jacket of the cable can be made of PVC or LSOH for different applications.

The patch cords are available with SC, LC, FC, ST & E2000 UPC/APC Connectors in MM & SM. The leads available in different lengths from 0.5 to 200M.

## Fibre Optic Pre-terminated Assemblies



Pre-terminated Fibre optic cable assemblies present an efficient and effective cable deployment option for any size of fibre optic network. High precision factory terminations coupled with exceptional quality cable in a range of construction and styles and fully factory tested terminations ensure peace of mind and rapid deployment.

### Manufacturing Options

Cable Type	Description	Fibre Count	Oversleeving Sizes (mm)	Jacket Options
Distribution (Dx)	900um tight-buffered distribution cable (sub-grouped 72f+)	2 - 144	2.0, 3.0 (<6f)	LSZH, PVC, Military Tactical Polyurethane
Breakout (Bx)	2.0/2.5mm tight buffered breakout cable	2 - 24	N/A	LSZH, PVC, Military Tactical Polyurethane
Subgroup (Gx)	900um tight buffered, 5.5mm subgroup fibre cable	24 - 144	2.0	LSZH
Micro cable (MC)	250um multicore micro cable	12 - 24	0.9, 2.0	LSZH, Double Jacket
Subgroup micro cable (SMC)	Sub-grouped 250um multicore micro cable	48 - 144	0.9, 2.0	LSZH
Loose Tube (LT)	250um loose tube fibre cable	6 - 144	0.9, 2.0	Nylon, CST, F/GRP, PE Sac Sheath



## Field Deployable Cable Reels



Schill GT310 Field Deployable  
Cable Reel



Schill GT380 Field Deployable  
Cable Reel



Schill HT380 Field Deployable  
Cable Reel



Schill GT450 Field Deployable  
Cable Reel

### Product Description

Field deployable cable reels offer a convenient method for roll-out and retrieval of fibre optic cable assemblies as well as a range of communications cabling. **PROPATCH** offer a range of Field Deployable cable reels) in variety of sizes and construction.

Hand wound reels offer a simple deployment and retrieval method that allows for patching of cable assemblies without the need to fully unwind the reel. These reels are well suited to the **PROPATCH** range of harsh environment cable assemblies including expanded beam, multi-channel physical contact and broadcast connectivity.



Cable Reel – 300m



Cable Reel – 500m



Cable Reel – 1000m

**PROPATCH** Field deployable offer a convenient method for roll-out and retrieval of Fibre optic cable assemblies as well as a range of communications cabling.

**PROPATCH** offers a range of cable reels in sizes to suit 300 ,500 and 1000 m cable reel of 6mm OD cable.

Hand wound reels offer a simple deployment and retrieval method that allows for patching of cable assemblies without the need to fully unwind the reel. These reels are well suited to the **PROPATCH/CORNING/OCC** range of harsh environment cable assemblies including expanded beam, multi-channel physical contact and broadcast connectivity.

### Applications:

- Broadcast and television networks
- Defense deployable communications
- Mine site and harsh environment cabling
- Deployable connectivity

## PROPATCH Fibre Closures



**PROPATCH Fibre Enclosures** are a quick and effective way to join or repair fibre cables in harsh environments such as underground pits or aerial applications. All cable entry and exit ports are sealed and accessed as required.

The enclosures include splice cassettes for fusion splicing, and you can easily access them without the need for special tooling. They feature a lockable clamp to prevent unauthorised entry and can be pole- and wall-mounted.

The Dome Enclosures will accept 48 & 96 Core Fibre and other large core counts

### Applications:

- Fibre cable fusion splicing in pits, aerial or pole-mounting
- Fibre cable joining or repairs
- Fibre cable expressing

### Fibre Optic Media Convertors



### P/N: EC10100MM-SC2 & EC10100GSM-SC2

PROPATCH 10/100/1000M Gigabyte Optical Fibre Media Converters can convert Optical-Electrical Ethernet signals between 10/100/1000MUTP interface (TX) and 1000M optical Fibre interface (FX).

The traditional 10/100/1000M gigabit Ethernet can be extended to the distance of 100km through optical Fibre link. The performance and quality of the products are excellent because of adopting latest Gigabit Integrated Circuit (IC). 6 Group LED indicated lights could fully monitor the working conditions of converters. It is easy for users to observe and diagnose the failure of converters.

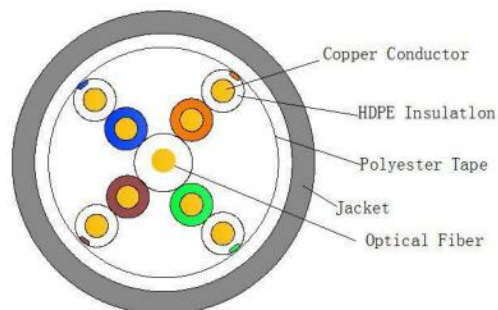
## FTTX/FTTH SOLUTIONS

### PROPATCH FTTX Hybrid Cable

**PROPATCH** offers Hybrid Multiple- Purpose Cables Cat5e+2SM Fibre for FTTX Applications.

#### Applications:

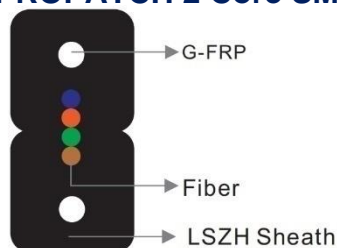
- New housing estates
- Major home renovations
- Commercial fit outs of old buildings
- New commercial building installs
- New or old refits of residential units



**P/N: FTTX-C5E+2FSM (305m/Drum)**

### FTTX/FTTH Drop Wire Cable

**PROPATCH 2 Core SM Drop Wire Flat Indoor Cable**



#### Applications:

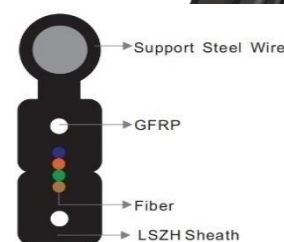
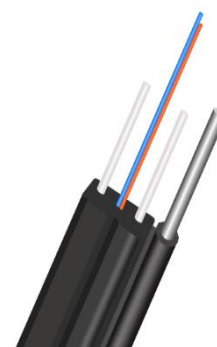
- Extreme smaller diameter, light weight, flexible, easily installed of FTTH
- Simple structure design, with excellent anti-pressure, tensile strength antiaging performance.
- Small bending radius, flexible performance can meet the requirement of FTTH

**P/N: FTTH-INTDSM-2 (1000M/ Drum)**

### 2 Core SM Drop Wire Flat Outdoor Cable with Steel Wire

#### Applications:

- Extreme small diameter, light weight, flexible, easily installed of FTTH
- Two parallel steel or FRP line with excellent anti pressure performance to protect fibre core.
- Single extra steel wire make cable, with strong tensile strength
- Groove design of 8 type, easy to rip, install and maintain
- PVC/LZSH jacket, environment friendly

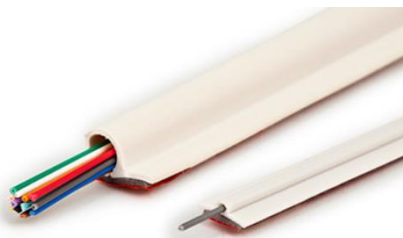


**P/N: FTTH-OUTDSM-2**



## **FTTX/ FTTH SOLUTIONS**

### **3M/Corning One Pass Fibre Pathway Solutions**



3M One Pass Fibre Pathway is a horizontal cable pathway and single mode Fibre distribution solution installed simultaneously in one pass on the wall just below the ceiling.

Utilizes 3M adhesive technology to adhere duct to wall.

Compatible with a variety of wall surfaces.

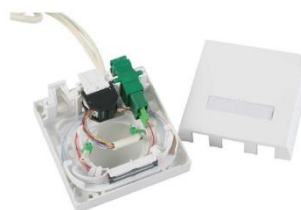
Available in a variety of lengths and pre-loaded with 6 or 12 Fibres.

Factory terminated at one end with MPO connector (1or 75-foot pigtail) or SC/APC fanout.

### **FTTX/FTTH Fibre Termination Boxes**



**PROPATCH 2 Core FTTH Fibre Box**



**3M/Corning 8686 FTTH 2 Core Fibre + RJ45 Box**



**PROPATCH 4 Core FTTH Fibre Box**



**PROPATCH 16 Core FTTH Fibre Box**

### **FTTH Fibre Patch Leads**



**SC/APC Duplex Lead**



**SC/APC Simplex Lead**



**SC/APC Pigtail**



# Audio-Visual- Radio Frequency-Coax-HDMI Solutions

## Coaxial cables

Matchmaster has a complete range of PAY TV and FTA approved cables for both commercial and residential applications. Matchmaster 'S' range includes standard and flooded RG6 and RG11 cable. Also available in White approved RG6 cable for indoor use. Whatever the application Matchmaster has the cable to suit.

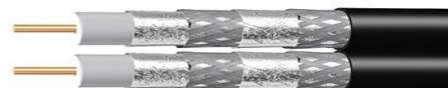
RG11 Quad Shield Cable 305M Reel  
P/N: [06MM-E11Q](#)

RG11 Quad Shield Cable Flooded 305M Reel  
P/N: [06MM-E11QF](#)

RG06 Quad Shield Cable 305M Reel  
P/N: [06MM-E06Q](#)

RG06 Quad Low Smoke Zero Halexon 305M Reel  
P/N: [06MM-E6QLZSH](#)

RG6 Quad-shield Cable Siamese 150M Reel  
P/N: [06MM-E6QS](#)



## Connectors

Matchmaster has a large range of RF & Video connectors to suit every application. Matchmaster 'S' range includes RG59, RG6, and RG11 Compression type connectors. Connectors available for F-Type, Pal IEC, BNC, RCA and many more.



## Tools



P/N: 08MM-ST05



P/N: 08MM-SKY-KIT



P/N: 08MM-SKY-KIT2

<https://www.lcp.co.nz/pages/products/136/Connectors-Adapters->

## Amplifiers and Modulators

### P/N:10MM-DDA14C

4 Port Apartment Amplifier with back feed



### P/N:10MM-DDA24

Digital Amplifier Sat/Ter 4 Way Splitter Amp with back feed and 4G Filter



### P/N:10MM-DDA28

Digital Amplifier Sat/Ter 8way Splitter Amo with Bracket and 4G Filter



## HDMI Extenders

### P/N: AC-EXO-UNC-KIT

4K HDMI Extender via Optical Fibre; up to 300 Meter.



### P/N:AC-EXO-444-KIT

4K HDMI Extender via Optical Fibre; up to 2 Kilometers using Single Mode Fibre, up to 300 meters using Multimode Fibre.



### P/N:AC-EX70-UHD-R

Ultra Slim 4K HDMI via HDBaseT 70 Meter Receiver with Bi-Directional Power



### P/N:AC-EX40-444-KIT

Ultra Slim 40m (70m HD) 4K60 4:4:4, HDR HDBaseT Extender





## Audio Visual Leads

### HDMI to HDMI

PROPATCH offers wide range of HDMI Cables/Leads  
Available Lengths: 1,2,3,5,10 & 20M.



### HDMI to DVI

High-Speed HDMI to DVI-D (18+1) Adapter Cable allows you to connect your HDMI equipped source devices to DVI enabled Displays. Moreover, you can also use it to connect DVI source devices, like laptop/desktop to HDTV and Displays with HDMI interface at high definition. Suitable for a conference video, education, and gaming enjoy an external display easily.



### PREMIUM Active Optical HDMI Cable

All HDMI cables are not created equal. Bullet Train has developed HDMI cables built for mission critical environments where stability is key. By delivering data over Cleerline SSF Fibre optics alongside copper wire, Bullet Train AOC Cables deliver 48Gbps and a high frame rate signal with much lower latency – up to 20% less than a passive copper HDMI cable. Available Lengths: 5,10,15,20,30 & 40M



### Security cables

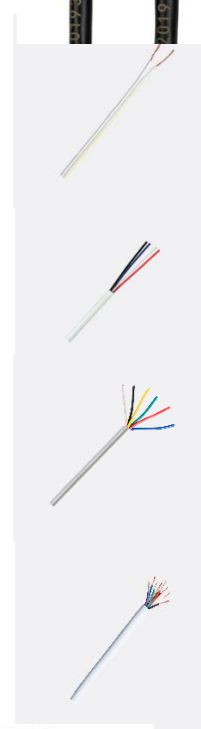
**2Core Security Cable (Available in 0.4,75& 0.85mm conductor)**

**4Core Security Cable (Available in 0.22 & 0.44mm Conductor)**

**6 Core Security Cable (Available in 0.22 & 0.44mm Conductor)**

**8 Core Security Cable (Available in 0.22 & 0.44mm Conductor)**

**Please email us for more information & Part Numbers**



# PROPATCH Server Cabinets & Racks

## PROPATCH Wall Frames



## Wall Mount Foldable Brackets



**PROPATCH** offers wide range of Horizontal & Vertical Wall Mount Frames. These frames are available in 2, 4, 6, 8 & 9 RU capacity and different depths 300,400 & 600mm.

## 37 & 47RU Open Racks



## **PROPATCH Wall Mount Cabinets**



**PROPATCH** Cabinets/Racks have been designed as a cost-effective data management solution for installers and customers who require quick installation and great value for money. **PROPATCH** Cabinets/Racks are designed to be easily wall mounted and are made of solid Steel with welded construction for added strength (One Person can Mount the Cabinet on the Wall). The Cabinet/Rack is supplied fully assembled with solid top and base (Knockout Cable Entry Points), plus removable side panels, front glass door, Earthing wires connected with frame & doors, all lockable for added security.

### **FEATURES AND INCLUSIONS (600 Deep Cabinets)**

- Supplied fully assembled, Complete all in one solution
- Lockable Tempered Glass Front Door with Cam-Lock
- Reversible Front Door
- 2 Way Ceiling Mount Fan Kit
- Removable Side Panels
- Adjustable 19" Rails Front & Rear of Cabinets
- Back Cable Entry Hole, Knock Out cable entry Top and Bottom
- 2 x Earthing Studs with cables, Cage-nuts & Extra Lock Keys
- Cabinet Supplied with Extra Hinges to swing Right to Left and Left to Right.

Item Number	Description
CAB-6USFWM-550	PROPATCH 6RU Wall Mount Cabinet 550mm Deep
CAB-6USFWM-600	PROPATCH 6RU Wall Mount Cabinet 600mm Deep
CAB-9USFWM-550	PROPATCH 9RU Wall Mount Cabinet 550mm Deep
CAB-12USFWM-550	PROPATCH 12RU Wall Mount Cabinet 550mm Deep
CAB-12USFWM-600	PROPATCH 12RU Wall Mount Cabinet 600mm Deep
CAB-18USFWM-550	PROPATCH 18RU Wall Mount Cabinet 550mm Deep
CAB-18USFWM-600	PROPATCH 18RU Wall Mount Cabinet 600mm Deep
CAB-24USFWM-600	PROPATCH 24RU Wall Mount Cabinet 550mm Deep
CAB-27USFWM-600	PROPATCH 27RU Wall Mount Cabinet 600mm Deep



## **PROPATCH Floor Standing Server Racks/Cabinets**



**PROPATCH** Freestanding Server Racks have been designed as a high-quality cable management solution, ideal for data centres and equipment rooms. These server cabinets are designed to be easily installed and are reinforced using heavy duty mounting rails and castor wheels. These server rack comes complete with front Glass door, mesh split and Solid back door. The racks locking system ensures the security of cabinets and the stability of the doors.

PROPATCH Offers wide range of Floor Standing Cabinets like 12,18, 22, 25, 37, 42 & 45 RU and in different Widths & depths, 600, 800, 1000 & 1200 Deep.

### **FEATURES AND INCLUSIONS**

- Supplied fully assembled
- Complete all in one solution
- Lockable front & back doors.
- Front Glass door, Mesh and Solid Door
- 4 Way Ceiling Mount Fan Kit
- 2 Fixed Shelves
- Heavy Duty Levelling Feet & Lockable Castor Wheels
- Cable Entry from the Top

<b>Item Number</b>	<b>Description</b>
CAB-12UFS-600	12RU 600x 600 deep floor Standing cabinet with Fan Kit
CAB-18UFS-600	18RU 600x 600 deep floor Standing cabinet with Fan Kit
CAB-22UFS-600	22RU 600x 600 deep floor Standing cabinet with Fan Kit
CAB-25UFS-XX	25RU floor Standing cabinet with Fan Kit, 600,800,1000 Deep
CAB-37UFS-XX	37RU floor Standing cabinet with Fan Kit, 600,800,1000 Deep
CAB-42UFS-XX	42RU floor Standing cabinet with Fan Kit, 600,800,1000 &1200 deep
CAB-45UFS-XX	45RU floor Standing cabinet with Fan Kit, 600,800,1000&1200 Deep

## IP Rated Outdoor Cabinets

### Wall Mount Cabinet



**PROPATCH** IP45 & IP65 outdoor wall mounted cabinets are an ideal solution to protect sensitive electronic networking equipment from harsh and demanding environments specifically where equipment may be exposed to dust and water. Constructed from exceptionally durable material the wall mount cabinets come fully assembled and supplied complete including rain hood, detachable rear wall mount bracket, dual locking system, and grounding pin. The cabinets are available in a wide variety of sizes to suit most projects.

Cabinets available in 4,6,12 & 18RU, 400 & 600mm Depths. All IP65 Cabinets comes without Fan Kit and IP45 with Fan Kit.

### Floor Standing cabinets



**PROPATCH** Outdoor Freestanding Cabinets. IP45 rated. Angled pivoting rain hood. Double 25mm heating protection. Forest green & Grey.

Floor Standing Cabinets available in 18, 24 & 27RU, 600 x800 & 800 x800.

IP65 Without Fan Kit Cabinets are also available in different depths and lengths.

Please Email us on [Sales@Lcp.co.nz](mailto:Sales@Lcp.co.nz) for Part Numbers and More Information.

## Argent V50 Data Vault



Typically, a computer room or data centre is a secure facility with restricted access. Even with those access restrictions, data centres are a working environment. This can represent a security risk. Business or Government departments often use hardware in a data centre that is highly sensitive. A second tier of physical security is an advantage.

The patented Argent Data Vault is a simple, cost effective security enclosure that will protect hardware devices that are installed in a server rack. The new Argent Data Vault allows your mission critical IT devices to be physically secure when installed in a server rack for maximum security and peace of mind.

### Features:

- Patented design
- Security enclosure for rack mounted hardware
- Can be installed inside any 19-inch server rack
- No external fasteners or screws when fitted
- Uses very little valuable RU space
- An extremely cost-effective security system
- Has integrated ventilation
- Secure cable entry
- Depth is adjustable
- Included front & rear factory fitted key locks. Option for client specified key lock
- Can be retrofitted into an existing server rack already in use

Argent V50 Data Vault Units are available in 2,4 & 6RU.

Please Email us on [Sales@Lcp.co.nz](mailto:Sales@Lcp.co.nz) for Part Numbers and More Information.

<https://www.lcp.co.nz/pages/products/101/Argent-V50-Data-Vault--Lockable-Draw->  
<https://youtu.be/xtOjm3i0MQ4>



## Cabinet Accessories

### Horizontal Power Boards (PDU)



PROPATCH Offers 6,8,10 &12 Way horizontal 1 & 2RU 19" Vertical Power Boards for NZ/AUS Sockets and UPS System.

### Vertical Power Boards (PDU)



PROPATCH Offers 10,15 & 20 Outlet Vertical Power Rail (10A & 15A) with 6kA C Curve MCB Circuit Breaker, on/off switch & 2M Power Cord with 3 Pin Plug BLACK Color.



Item Number	Description
CAB-H6W1RU-PDU	PROPATCH 1U 19" 6 Way PDU Australian Sockets
CAB-H8W1RU-PDU	PROPATCH 1U 19" 8 Way PDU Australian Sockets
CAB-H10W2RU-PDU	PROPATCH 1U 19" 10 Way PDU Australian Sockets
CAB-H8W1RU-IEC	PROPATCH 1U 19" 8 Way IEC PDU for UPS & Computers
CAB-V10W-PDU	PROPATCH Vertical 10 Way PDU Australian Sockets
CAB-V15W-PDU	PROPATCH Vertical 15 Way PDU Australian Sockets
CAB-V20W-PDU	PROPATCH Vertical 20 Way PDU Australian Sockets

## Cabinet Accessories

### Cabinet Fixed & Cantilever Shelf



### Cabinet Fan Kit



PROPATCH has different types of Fan Kits, Such as 1 U with 4 Fan rack mountable, 1U 4 Fan Kit with Thermostatic feature and Cabinet Replacement fan kit.

### Cabinet Plinth/ Bolt Down Kit



Cabinet Plinth. 100mm high. Available for 600x600,600x800,800x800,800x1000,800x1200mm Cabinets.

### Cabinet Chimney

650mm x 410mm x 68mm & 900mm x 410mm x 68mm

Item Number	Description
CAB-FS-XX	Fixed Shelf comes in 350,450,600 & 800 Depth
CAB-Draw-XX	Draw Type 1RU Tray Comes in 600 & 800 Depth
CAB-FAN4-1U	4 Fan Kit 1 RU 19" for Cabinets
CAB-FAN4-THEMO	4 Fan Kit With thermostatic 1RU 19"
CAB-Plinth-XX	Plinth for Floor Standing Cabinets 650 & 900mmLong



## Cable Pathway

### Catenary Wire & Hooks



Catenary Wire

Turnbuckles

MAXI Hooks



Hook Bolt Suspension Anchor

Hook Bolt Suspension Anchor

Hex Nut Zinc



HILTI Micky Pins 14 7 18mm

Hand Driven Tool

VELCRO 12 & 19mm



### Floor Duct

### Conduits

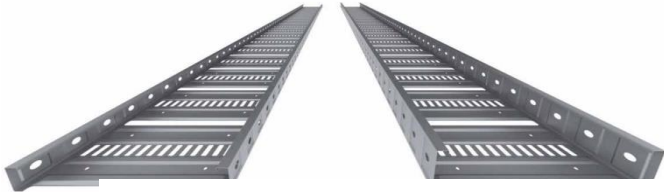
### Fibre Ducting Raceway

Item Number	Description
10009-2	PROPATCH Catenary Wire 190M Roll Green
10010-6	PROPATCH Turnbuckle 6mm
10010-4	PROPATCH Maxi Hooks for Wood
10010-5	PROPATCH Eye for Wood
514R/518R	Hilti Micky Pins 14mm & 18mm
PRO-V12/19	PROPATCH Velcro 12 & 19mm wide 25 Yards
FD70-1M	PROPATCH Floor Duct 70mm Grey Colour 1M
FD70-2M	PROPATCH Floor duct 70mm Grey Colour 2M



## PROPATCH Cable Tray Solutions

### CABLE TRAY



### CABLE LADDER

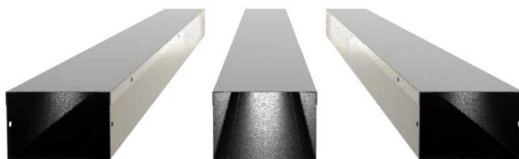


PROPATCH system offers a diverse range of cable ladders made from a variety of materials, with a wide choice of cabling depths and load capabilities. They provide a cable management solution for heavy commercial, industrial, mining, LNG or other applications.

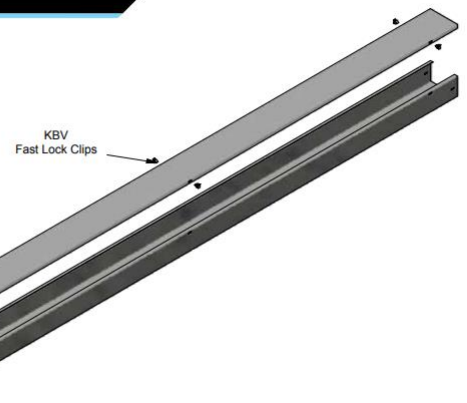
They are supplied in straight lengths but use fittings to make directional or level changes with bends, tees, crosses or risers, or to change cabling widths with reducers.

Please email us on [Sales@lcp.co.nz](mailto:Sales@lcp.co.nz) for more information.

### CABLE TRUNKING



Trunking Body and Lid

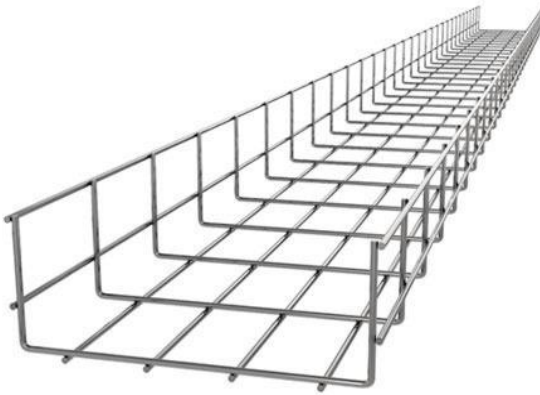


PROPATCH can effortlessly supply your cable trunking (also referred to as steel trunking or cable ducting), and we guarantee that our cable trunking meets and fulfils all manufacturing and performance standards.

Joining lengths together or to fittings used to make bends, rises, tees or crosses in your cabling network supported by duct is achieved with the built-in splices. PROPATCH offers a clip-on lid style cable duct for fast installation, but if extra security of cables is needed, a screw on lid option is offered too.

## Cable Tray Solutions

### Basket Cable Tray



PROPATCH offer Basket type Cable Trays & Mounting accessories. These trays are available in Sizes.

### Modempak Skirting Channel



For new office and commercial building construction and refurbishments, Modempak's skirting channel is wall-mounted and provides for cost-effective and easily installed distribution of power and data cabling.

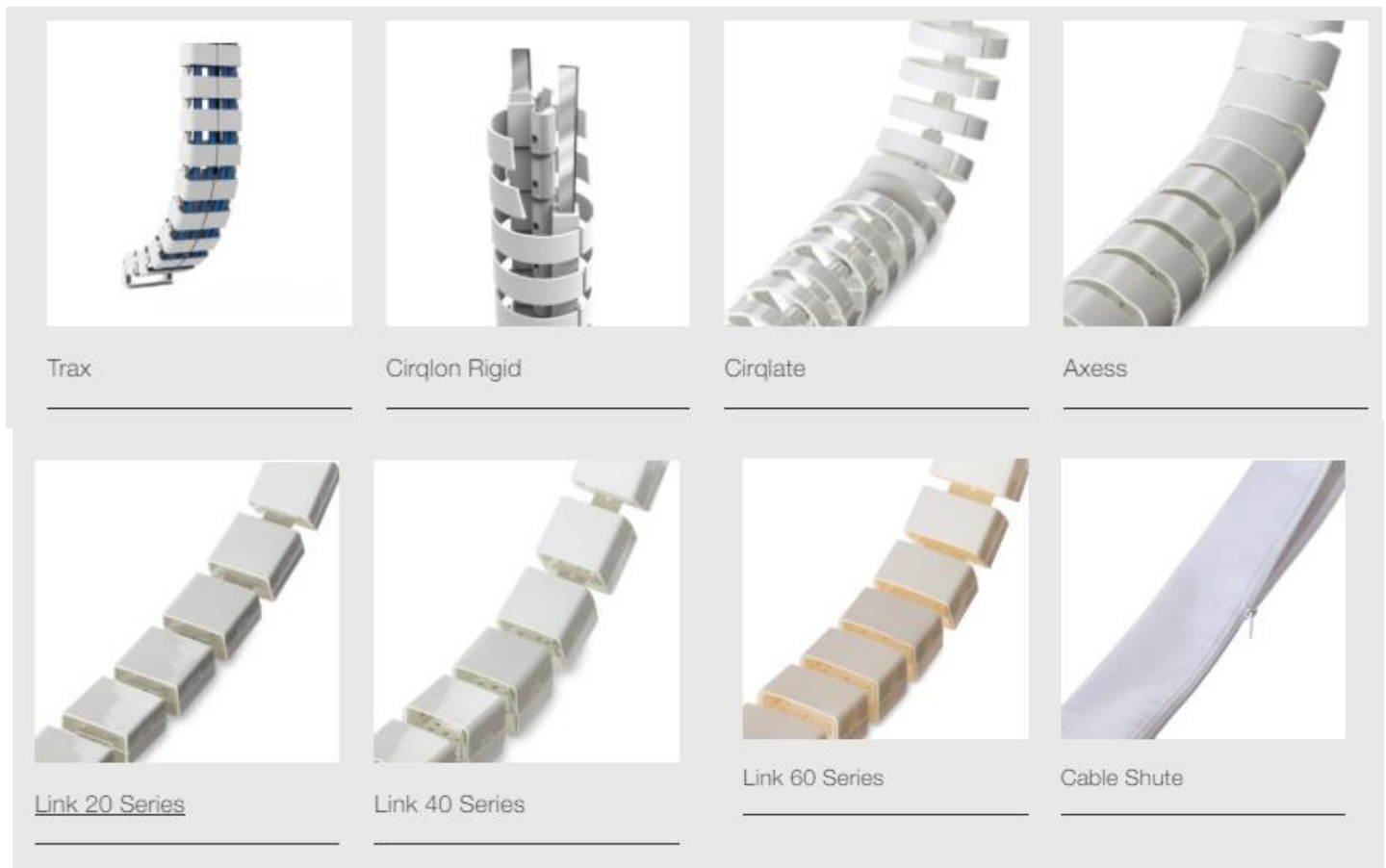
The skirting channel is designed for high speed data systems and cabling requirements and is fully CAT6/6A capable. The skirting offers separate channels or dividers for full segregation between power and data cable.

Modempak skirting channel is made from high quality aluminium alloy providing a strong durable body and convenient Snap-On cover plates. The skirting can be specified in any of the Dulux Duralloy © range of over 100 powder coat Colours with Penrose White being a standard stock Colour for immediate delivery.

Data and Power Outlets surface mount on the skirting channel which is compatible with all major brands.

- Sizes available 85 x 60 Single Channel, 110 x 60 Single Channel and 170 x 60 Double Channel
- Channel is supplied in 3 metre or 6 metre lengths. Alternative lengths can be supplied upon request.
- Channel Dividers can be used to segregate power and data.
- CAT6 and CAT6A Capable

## Umbilical's Products



PROPATCH offers wide range of Ceiling cable droppers. Ceiling Cable droppers are ideal when bring Electrical or Data cables from ceiling to desk. There features either single or dual compartment for cable distribution allowing power and data cabling to be run separate or simultaneously when using this dropper.

The Ceiling cable droppers are supplied with proper Ceiling and Desk mounting and available in different length and sizes.

### Service Column

Modempak 's 80mm x 86mm vertical service column (pole) is an extremely versatile, economic and easy to install multi service outlet unit. The service pole is a two-compartment channel with two removable covers and spans floor to ceiling with two lengths stocked – 3m and 6m.

- 80mm wide (across the face) x 86mm deep twin channel pole
  - Accepts PDL 600 series outlets. PDL outlet plates and mounting clip are available
  - Each pole supplied with ceiling flange, top and bottom brackets.
  - 3 metre and 6 metre lengths stocked
  - Other lengths available for project quantities – call to discuss
  - Optional Jacking struts for supporting the pole against the roof available.
- Body and cover manufactured from extruded aluminium.

Please email us on [Sales@lcp.co.nz](mailto:Sales@lcp.co.nz) for more information





## Outside Plant Products

### Channell Copper Products

#### Copper Heat-Shrinkable Openable Joint Closure

The Channell Openable Joint Closures utilize proven heat-shrink technology to seal cables into the base. These closures support

- Large oval port to accommodate looped cables
- All auxiliary ports are sealed with easy knockouts
- These closures are re-enterable without the need of special tools
- Weatherproof (IP68), insect proof & UV resistant
- These closures are recommended for use underground in manholes or joint boxes, or overhead applications on poles or walls.



Openable Joint, Lockable Small – OJ30



Openable Joint, Lockable Large – OJ31



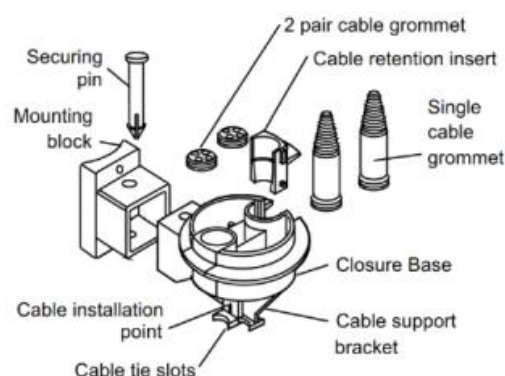
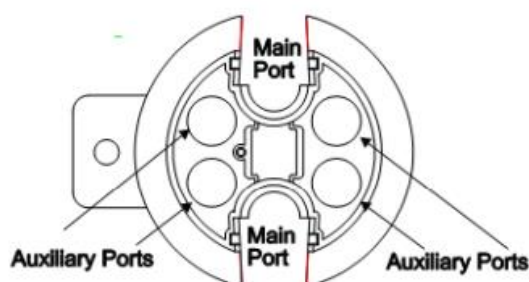
Openable Joint, Lockable Large – OJ32

Item Number	Description
130002	Channell OJ30 Closure Standard Dome Lid - Standard Clamp 50 PR
140012	Channell OJ31 Closure - Standard Lid, Standard Clamp 100 PR
140058	Channell OJ31 Closure Long Dome Lid - Standard Clamp 100 PR
150030	Channell OJ32 Closure Standard Dome Lid - Standard Clamp 400 PR

### Aerial Heat-Shrinkable Openable Joint Closure

The Channell Aerial Openable Joint weatherproof closure (31D) is a re-enterable ready access closure suitable for distribution of aerial copper. The unique looping feature of the 31D closure allows uninterrupted cable runs to be spliced to branch cables or terminated as subscriber drop wires from the one convenient location. The 31D closure can accommodate up to 100 pair of jointed copper cable.

- Weatherproof and insect proof
- Robust construction
- UV resistant
- No heat required for sealing cables
- Main cable can be looped through removable inserts
- Re-entry is achieved without the need of special tools
- Multiple port entry configuration
- Suitable for pole or wall mounting (not underground)
- Available with lockable/re-openable sealing clam



Item Number	Description
140038	Channell OJ31d Aerial Closure Standard Dome Lid - Standard Clamp
180096	Maintenance Kit, 31D Series,

### Underground Power Isolation Closures (UPIC)

The 31 & 32 Series UPIC enclosure offers an ideal solution for isolating low voltage underground network services in applications where pit or manhole installation is required. This fully submersible, re-openable enclosure is perfect for the ever-increasing requirements to house HRC devices, links, fuses and PCB's in underground electrical networks.



31 Series UPIC



32 Series UPIC

- Designed to meet the harshest of climatic conditions
- Enclosure rated IP68
- Re-enterable enclosure that utilizes proven heat-shrink and mastic seal technology to seal cables
- All base ports are sealed until required – easy knockouts
- Re-entry is achieved without the need of special tools
- Multiple port entry configuration
- Suitable for pit installation or direct buried
- Available with lockable or sealed clamp Applications:
- Street Lighting • Traffic signals,
- Bus stop shelter lighting
- Direction and locality signs
- Public conveniences
- Public telephones
- CCTV Distribution Systems

Item Number	Description
140039	31 Series UPIC Closure kit only with mounting strip, std orange dome
180022	Maintenance Kit, Auxiliary Heat-shrink Sleeves (pkt 10)
180074	Maintenance Kit, Main Port Heat-shrink Sleeves (pkt 3)



## Telco/Electrical Vault - Pit Products

Channell has developed the most advanced pit and chamber technology in the world with the patented BULK series Vaults and SHIELD cover design



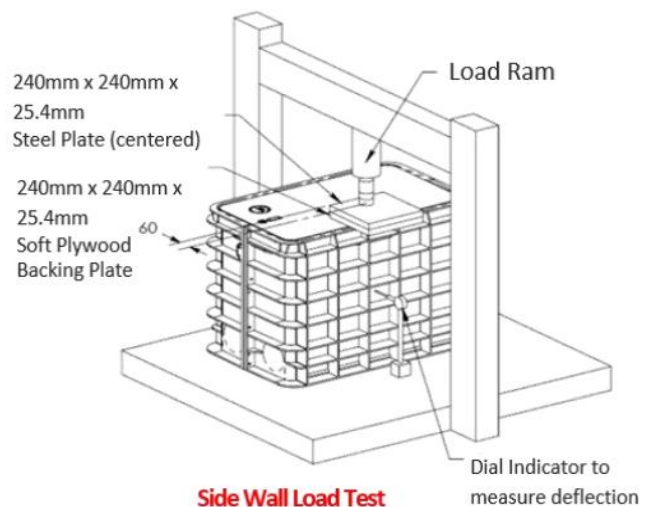
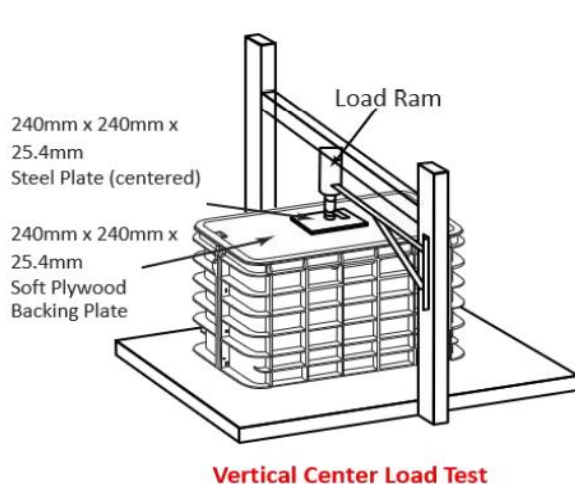
The BULK's HDPE vault design delivers an incredible 27tons of vertical load carrying capacities in a lightweight construction package that exceeds the vertical load carrying capacities of concrete, polymer concrete, and many other body materials. Easy to deploy & adapt to site requirements the BULK series vault takes installation efficiencies to THE NEXT LEVEL.

The SHIELD cover meets or exceeds 15 tons load rating while being 50% lighter than concrete, polymer concrete. SHIELD covers are tested to the highest standards available in the global market and Channell is proud to have pioneered Endurance Stress Testing (EST™) which analyzes cover fatigue in the field. EST™ provides essential data on the life expectancy of a SHIELD lid in the field and confirms its potential life expectancy.

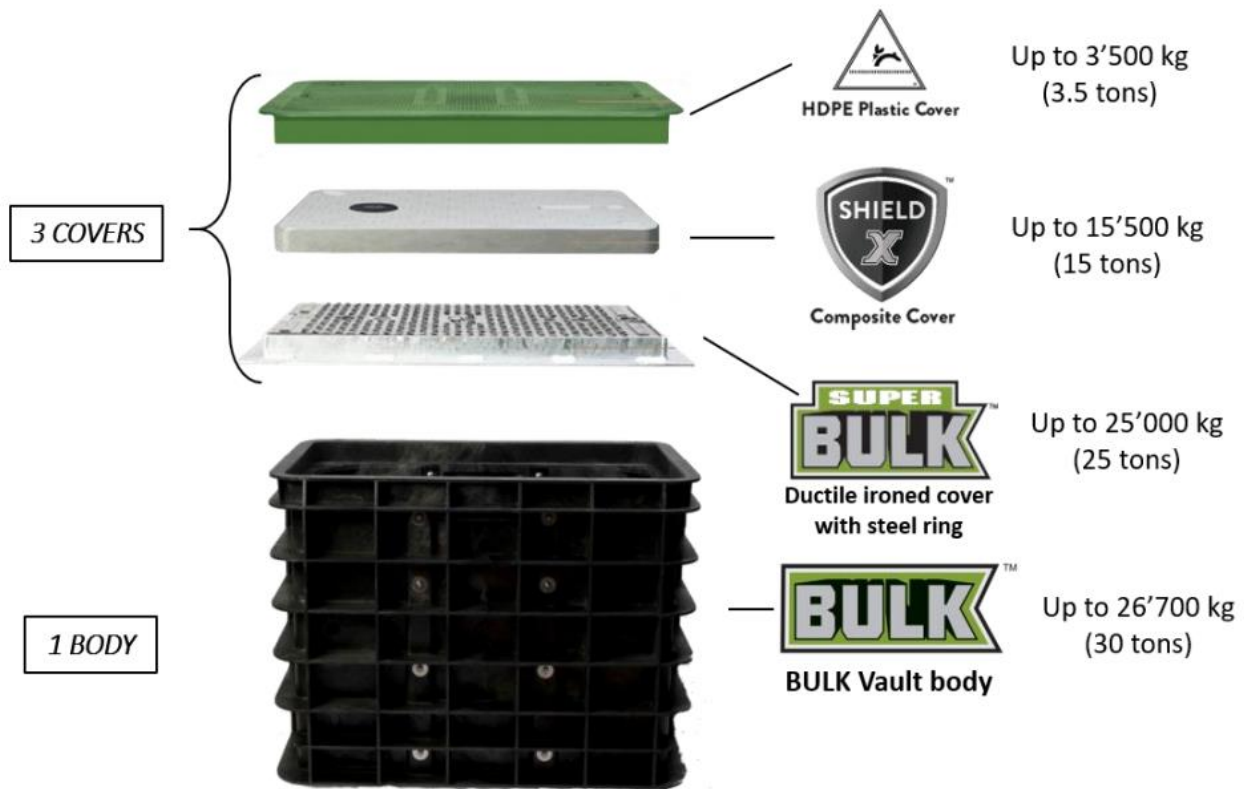
### BULK / SHIELD Features:

- Durable/Lightweight/Strong (TIER 22)
- Highest Load Rating to Weight Ratio in the Industry
- Vertical and Horizontal Rib Design
- Embedded Vertical Racking
- Reduced Installation Cost
- Upgradeable Cover Sets
- Superior Fatigue Resistance (EST)™

**BULK VAULTS are test BEYOND ALL International Standards, across all rated classes as a COMPLETE Manhole & Cover assembly**



## Channell Telco/Electrical Vault - Pit Products



**1- BODY & 3 - COVER SET OPTIONS**

### BULK BODY DESIGN:

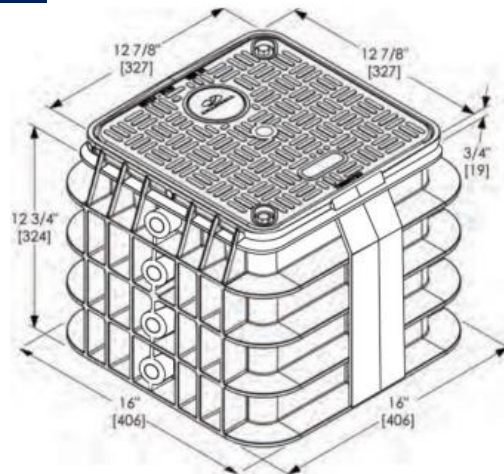


- Straight wall design improves lid load strength.
- Flush mounted racks enhance sidewall and vertical strength of pit while increasing usable space.
- Ribbed sidewall design secures
- Body into backfill soil and eliminates sidewall deflection.
- HDPE bodies provide easy field alteration while eliminating water absorption and material degradation while maintaining structural integrity and eliminating toxic Fibreglass dust.

### CHANNELL BULK0 Series 12" Pits (1212)



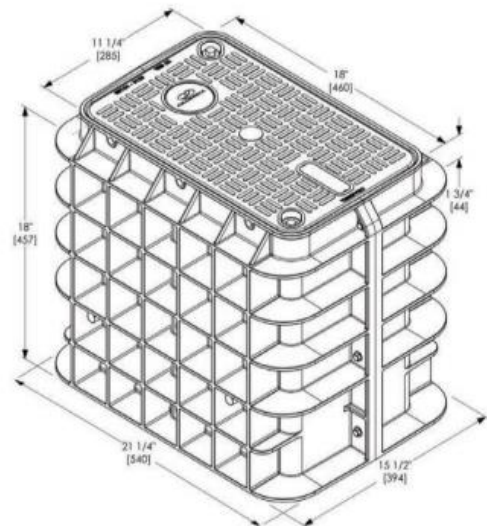
12"/305 mm depth



### CHANNELL BULK1 Series 18" Pits (1118)



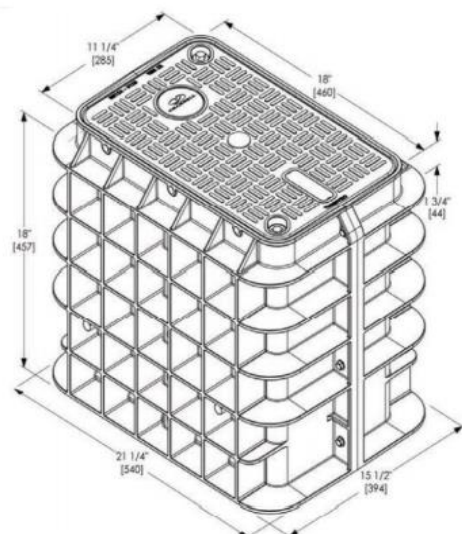
18"/457 mm depth



### CHANNELL BULK2 Series 18" & 24" Pits (1324)



18"/457 mm depth





### CHANNELL BULK3 Series 18" & 24" Pits (1730)



Channell Bulk3 GLB,1730 Pits available in 18" & 24"

### CHANNELL BULK4 Series 24" & 36" Pits (2436)



### CHANNELL BULK5 Series 24" & 36 "Pits (2448)



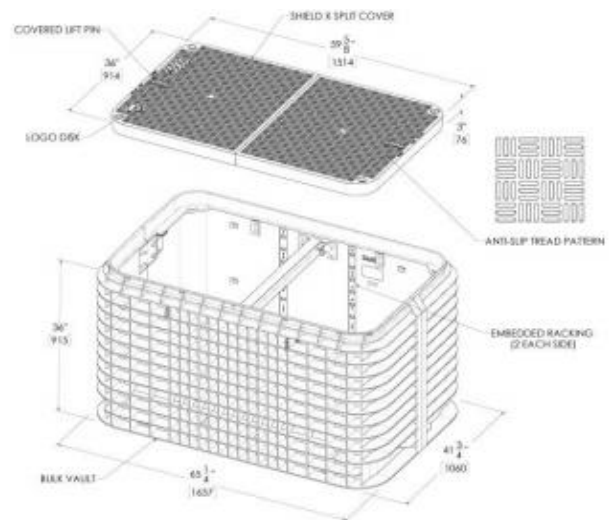
All Pits Comes in Different Length and Depths. Pits comes with Polymer Lids , but Metal Lids also available for heavy duty application.  
For Part Numbers and Different sizes, please email us on [Sales@Lcp.co.nz](mailto:Sales@Lcp.co.nz)



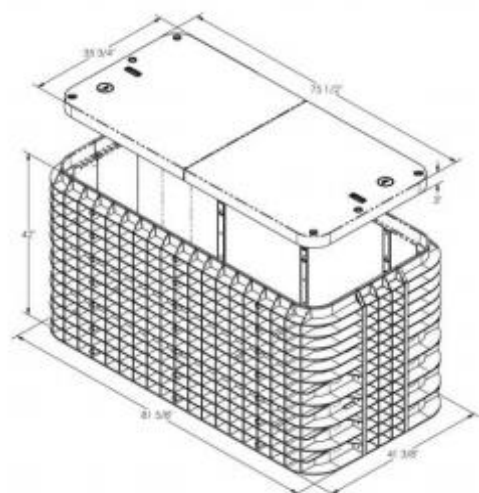
### CHANNELL BULK7 Series 36" Pits (3048)



### CHANNELL BULK8 Series 36" & 48" Pits (3660)



### CHANNELL BULK9 42" Series Pits (3676)



All Pits Comes in Different Lengths and Depths. Pits comes with Polymer Lids , but Metal Lids also availabe for heavy duty application.

For Part Numbers and Different sizes, please email us on [Sales@Lcp.co.nz](mailto:Sales@Lcp.co.nz)

### CHANNELL BULK Base Extensions



Base extensions



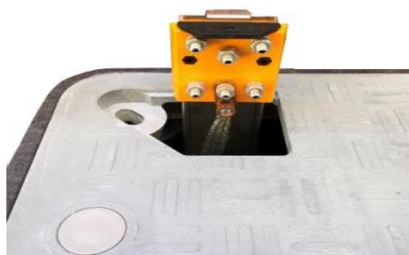
Base Extensions clips, comes with base extensions

Item Number	Description
BULKA1324-EXT6	BULK2 (1324) EXTENSION 160mm (6") BLACK
BULKA1730-EXT10	BULK3 (1730) EXTENSION 250mm (10") BLACK
BULKA2436-EXT10	BULK4 (2436) EXTENSION 250mm (10") BLACK
BULKA2448-EXT14	BULK5 (2448) EXTENSION 355mm (14") BLACK
BULKA3048-EXT14	BULK7 (3048) EXTENSION 355mm (14") BLACK

### CHANNELL BULK Ductile Iron Cover Sets



### CHANNELL Rapid Locate



Rapid Locate mechanism with pull up isolation tab. Tap



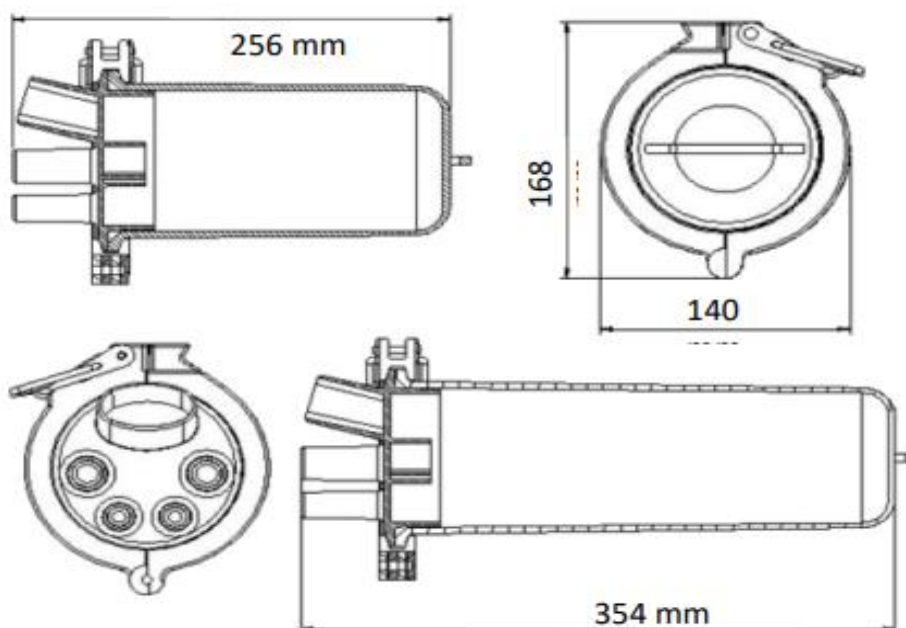
### **CHANNELL Fibre Optic 14000 Series closures**

The 14000 series fibre joint closure consists of a base, dome cover, sealing ring and cover clamp. The Dome and base are manufactured from Polypropylene. The internal fittings consist of a main stalk assembly with double-sided compact splice trays, supporting 2x 6 splice combs inserts per side. A total of 12 splices are supported on each compact tray with a total of 24 for the double-sided tray, however the fibre splice combs can be easily removed if a PCL 1:4, 1:8 or 1:16 splitter is to be installed into tray. The 1400 series heat-shrink fibre closures come in two sizes, 14001 & 14002.



**14001 Closure**  
Supports 12 fibre splices

**14002 Closure**  
Supports 24 fibre splices



Item Number	Description
140001	Channell 31 Series - 12 Fibre Splice Closure, 2 x 12 fibre Tray, Short Dome
140002	Channell 31 Series - 24 Fibre Splice Closure, 2 x 12 fibre Tray, Short Dome

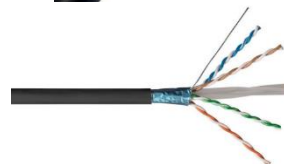
## Outside Plant Cables

### Copper Cables

Cat3 25, 50 & 100 Pair Outdoor Gelfilled Cables














Cat6 F/UTP Shielded Outdoor Cable PE Jacket



Cat6 U/UTP Gelfilled Outdoor Cable PE Jacket



### Fibre Optic cables

			
Nylon Jacket Loose Tube	FRP/GRP Armoured Loose	CST Armoured Loose Tube	Sacrificial Sheath Loose Tube
			
ADSS Fibre Optic Cable	Fire Rated Optical Cable	FRP Yarn Armoured Military Breakout Series Cable	FRP Yarn Armoured Military Distribution Series Cable
			
Military Breakout Series Fibre Optic Cable	Military Distribution Series Fibre Optic Cable	Multifibre Micro Cable	



## 3M/Corning High Gel Re-enterable Encapsulant 8882



3M/Corning High Gel Re-enterable Encapsulant 8882 is a two-part nonurethane encapsulating compound. The encapsulant aggressively adheres to filled cable and is compatible with common plastics used in telephone splice connectors.

The encapsulant permits easy cable splice re-entry for future changes and maintenance. The 8882 encapsulant is one of a system of products available from 3M-Corning.

The High Gel Re- Enterable Encapsulant 8882 comes in different packaging and Sizes, for more information, please email us on [Sales@Lcp.co.nz](mailto:Sales@Lcp.co.nz)

### PLP Communication Products



Bonding & Grounding



Copper Networks



Demarcation



Fiber Networks



Pole Line Hardware

Products that perform better, last longer and are easier to install - you can count on Preformed Line Products to provide high quality closures and solutions that meet the rigorous demands of today's modern communications networks. We serve all segments of the communications industry including telecommunications network operators, cable television and broadband service providers, corporations and enterprise networks, government departments and agencies and educational institutions.

For more information, please email us on [Sales@lcp.co.nz](mailto:Sales@lcp.co.nz)



[WWW.LCP.CO.NZ](http://WWW.LCP.CO.NZ)



## Active Equipment's

### Fibre Optic Media Convertors



**P/N: EC10100MM-SC2 & EC10100GSM-SC2**

10/100/1000M Gigabyte Optical Fibre Media Converter PROPATCH Series Gigabit Fibre Media Converter can convert Optical-Electrical Ethernet signals between 10/100/1000MUTP interface (TX) and 1000M optical Fibre interface (FX). Available in MM & SM. SM CM are available in 10,20,40,60,80 & 100KM Range.

### PROPATCH Copper and Fibre GBIC/SFP

#### Copper RJ45 Interface GBIC/SFP



#### Fibre Optic MM & SM GBICs/SFP Transceiver Modules

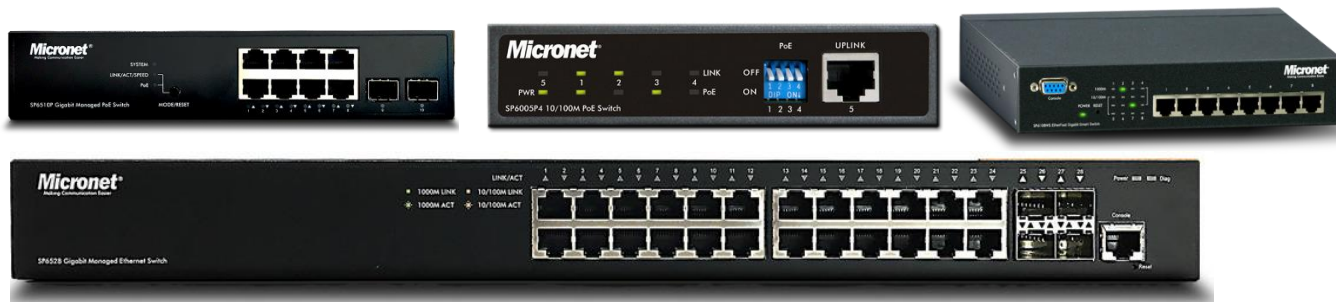


PROPATCH offers wide range of Copper and Fibre Optic GBIC- SFP transceiver Modules. Copper & Fibre GBIC/SFP Modules are available for 1GB and 10 GB Solutions.

Fibre GBIC/SFP comes in Multimoded and SM with different distance range (10,20,40,60,80 & 100 KM). PROPATCH GBIC/SFP Transceivers are Cisco Compatible

Item Number	Description
E-SFP-GB-TX	PROPATCH 1000BASE-T-100M Copper RJ-45 Interface SFP-Transceiver-GBIC
E-GLC-LH-SMD-10-20-40	PROPATCH 1000Base SFP 1310nm Transceiver Module. Available in different distance range 10,20,40,60,80 & 100Km.
E-GLC-SX-MM	PROPATCH 1000BASE SFP 850nm 550m SFP-Transceiver-GBIC
SFP-GE-BXA	PROPATCH SFP 1310/1550 10KM Single Fibre SFP-Transceiver-GBIC

## Micronet Network Switches

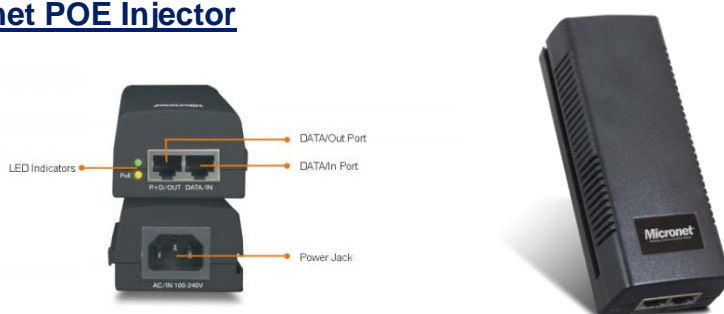


Micronet Offer wide range of Ethernet & POE switches. LCP all Ethernet & POE switches in 4,8,16,24 & 48 Ports with SFP/GBIC slots in NZ & Fiji.

Micronet Switches are quite easy to install and user-friendly Gigabit Unmanaged & Managed Switches for your infrastructure applications. By offering extraordinarily rich features, it allows quick deployment, infrastructure expansion with functionality, security, and manageability for different network infrastructure applications. Micronet Switches are perfect and cost-effective solution for small and mid-size businesses.

For More Information, please email us on [Sales@lcp.co.nz](mailto:Sales@lcp.co.nz) or Visit to our website: [WWW.LCP.CO.NZ](http://WWW.LCP.CO.NZ)

## Micronet POE Injector



Micronet SP390I is a single port, high-power solution for remote powering of current and emerging high-power applications. Generating up to 30W, SP390I enables remote power for a new range of applications including 802.11 Access Points, pan-tilt-zoom (PTZ) cameras and video- phones. It complies to IEEE 802.3at PoE standard and is backward compatible to IEEE802.3af. It can power both existing 10/100Base-T network devices and emerging wireless 1000Base-T devices such as IP camera and wireless IEEE 802.11n access points.

Item Number	Description
SP6005P4	Micronet 5-Port 10-100M PoE Unmanaged Switch with 4-port PoE- 62 Watts
SP6108	Micronet 8-port Gigabit Ethernet Unmanaged Switch
SP6008PWS	Micronet 8-port Web Smart PoE Unmanaged Switch with 8-port PoE-120 Watts
SP6510P	Micronet 10-Port Gigabit Managed PoE Switch -130 Watts
SP6016PH	Micronet 16-Port 10/100M PoE Unmanaged Switch-120 Watts
SP6016P8	Micronet 16-Port 10-100M PoE Unmanaged Switch with 8-port PoE- 65 Watts
SP6528	Micronet 28-Port Gigabit Managed Ethernet Switch
SP6526P	Micronet 26-Port Gigabit Managed PoE Switch -370 Watts
SP390I	Micronet 10/100/1000M Power over Ethernet PoE Injector

# Cisco Network Switches



Cisco delivers a comprehensive portfolio of switching solutions for Enterprise Networks, data centers, and smaller businesses. These solutions are optimized for a wide range of industries, including service providers, financial services, and the public sector.

## Campus LAN Switches - Access

- [Cisco Catalyst 9400 Series Switches - modular access](#)
- [Cisco Catalyst 9200 Series Switches](#)
- [Cisco Catalyst 3850 Series Switches](#)
- [Cisco Catalyst 2960-L Series Switches](#)
- [Cisco Catalyst 2960-X Series Switches](#)
- [Cisco Edge Series](#)
- [Cisco Redundant Power Systems](#)

[Cisco Catalyst 9300 Series Switches](#)

[Cisco Catalyst 4500 Series Switches](#)

[Cisco Catalyst 3650 Series Switches](#)

[Cisco Catalyst 2960-Plus Series](#)

[Cisco Catalyst 1000 Series Switches](#)

[Cisco Meraki Cloud Managed Switches](#)

## Campus LAN Switches - Compact

- [Cisco Catalyst 3560-CX Series Switches](#)
- [Cisco Catalyst 2960-C Series Switches](#)
- [Cisco Catalyst 2960-CX Series Switches](#)
- [Cisco Catalyst 2960-L Series Switches](#)
- [Cisco Catalyst Digital Building Series Switches](#)



## Data Centre Switches

- [Cisco Nexus 9000 Series Switches](#)
- [Cisco Nexus 7000 Series Switches](#)
- [Cisco Nexus 5000 Series Switches](#)
- [Cisco Nexus 3550 Series](#)
- [Cisco Nexus 3000 Series Switches](#)
- [Cisco Nexus 2000 Series Fabric Extenders](#)
- [Cisco R Series Racks](#)
- [Cisco RP Series Power Distribution Units](#)



**For more information, please email us on [Sales@lcp.co.nz](mailto:Sales@lcp.co.nz)**



[WWW.LCP.CO.NZ](http://WWW.LCP.CO.NZ)





## TP LINK Network Switches



### Managed Switches

TP-LINK's Jet Stream Series Managed Switches provide a robust and future-proof network solution with high accessibility, great scalability, rich management features and security functions, making it ideal for enterprises, ISP and campus networks.



### Smart Switches

TP-LINK's Smart Switches offer a cost-effective network solutions for the small and medium business. Integrated with useful L2 features such as 802.1Q VLAN, QoS, IGMP Snooping, STP, Storm Control and SNMP, TP-LINK's Smart Switch provides administrators a simple, cost-effective yet intelligent networking solution.



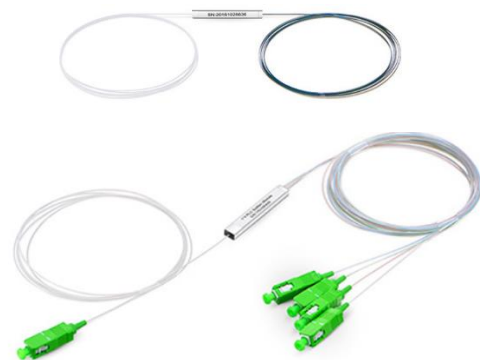
### Unmanaged Switches

TP-LINK's Unmanaged Switches can increase the speed of your network and backbone connection. They are simple plug and play products, with no software configuration and providing high performance ports that allow for simple and effective expansion of small and medium business networks, making work that much more efficient.

For more information, please email us on [Sales@lcp.co.nz](mailto:Sales@lcp.co.nz)

## **PROPATCH Fibre Optic PLC Splitters**

- 1: PLC Fibre Splitter, Steel Tube, Bare Fibre 250µm,  
Single Mode, No Connectors  
Available in 8,16,32 & 48 Way
- 2: PLC Fibre Splitter, Mini Module, 900µm,  
Available in 8,16,32 & 48 Way with Single and Double  
Input.  
Connectors options: LC/SC UPC, LC/SCAPC
- 3: PLC Fibre Splitter, Splice/Pigtailed ABS Module, 2.0mm  
Available in 8,16,32 & 48 Way with Single and Double  
Input.  
Connectors options: LC/SC UPC, LC/SCAPC
- 4: PLC Fibre Splitter with Wall Mount Box  
Available in 8,16,32 & 48 Way with Single and Double  
Input.  
Connectors options: LC/SC UPC, LC/SCAPC
- 5: PLC Fibre Splitter, Standard LGX Cassette  
Available in 8,16,32 & 48 Way with Single and Double  
Input.  
Connectors options: LC/SC UPC, LC/SCAPC
- 6: PLC Fibre Splitter, 1U 19" Rack Mount  
Available in 8,16,32 & 48 Way with Single and Double  
Input.  
Connectors options: LC/SC UPC, LC/SCAPC



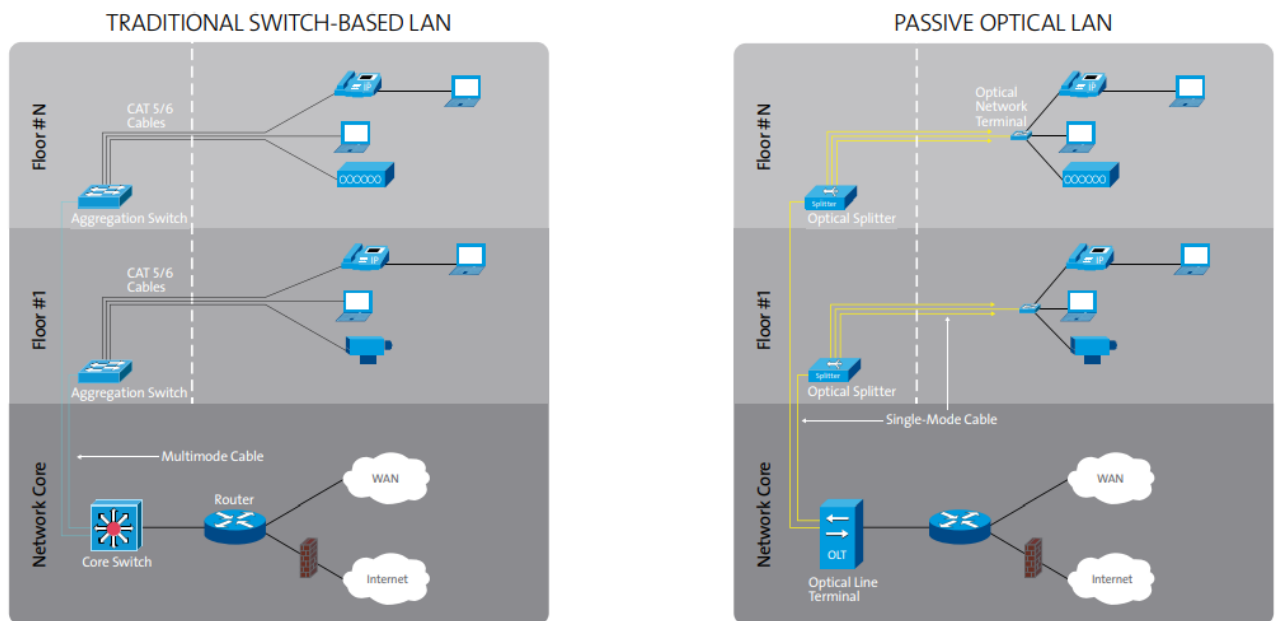
**For more information, please email us on [Sales@lcp.co.nz](mailto:Sales@lcp.co.nz)**

## Passive Optical Solutions For Local Area Networks (Tellabs GPON Solutions)

### What Is Passive Optical LAN?

In a traditional switch-based architecture, multiple tiers of electronics are used to connect users. Ethernet switches in the equipment room are connected via optical Fibre to aggregation switches in telecommunication closets. Individual copper cables extend to each end-user device. In contrast, POL replaces aggregation electronics and copper cables with passive optical splitters and single-mode Fibres.

This creates an architecture that is lower in cost to purchase, install and maintain – and with a far longer life-span – than traditional copper architectures.



### Why Passive Optical LAN?

#### Day 0

- Eliminate access-layer electronics between the core switch and the workstation
- Smaller cabling infrastructure footprint reduces or eliminates telco closets, freeing up floor space
- The result? Reduced capex (an average of 20-50 percent) compared with copper-based LANs.

Days 1-10,000

- Fewer electronics equals less maintenance, troubleshooting
- Fewer actives reduces power, HVAC requirements
- Simple network design reduces time, cost of provisioning and upgrades
- Single-mode Fibre means no "rip and replace" of the cabling as bandwidth demand grows

The result? Reduced opex (up to 50 percent on average) compared with traditional copper LANs

Depending on the size of your LAN, with POL you can realize:

- 20-50 percent savings on the cost of the cabling technology
- 30-50 percent savings on the cost of network installation
- 30-100 percent reduction in telecommunications closet footprint
- 50-75 percent reduction in the total installed cable weight in your ceilings, floors and walls
- Up to 60 percent reduction in the total installed cable length

**For more information, please email us on [Sales@lcp.co.nz](mailto:Sales@lcp.co.nz)**

## **Optical Cable Corporation (OCC) Fibre Solutions**

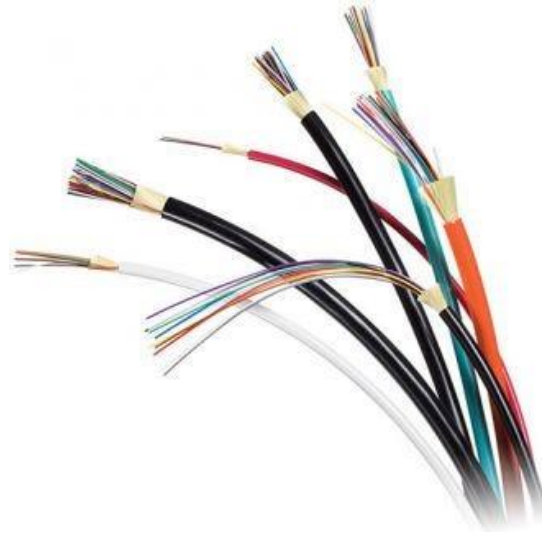
### **Fibre Commercial Enterprise Solutions**

OCC Offer wide range of Fibre cables and Complete Hardware solutions for Commercial Enterprise.

OCC offer Indoor, Indoor/Outdoor Armored, Hybrid, Outdoor & Campus Cable.

Click on below link for More Information:

<https://www.occFibre.com/products/>



### **Fibre Optic Military Cables**

OCC has complete solution for Military. OCC offer D series Mil-Tac, D series Mil-Tac Rodent Deterrent, Military Tactical cable external Environment & B-Series Mil Tac, B -Series Mil-Tac Rodent Deterrent.



### **OPTICAL Cable Assembly Deployment Reels**

The OCC Modular Advanced Reel System (MARS) is a high strength lightweight stackable reel system for storage, deployment and retrieval in harsh environment installations.

This MIL-qualified and listed DoD products will enable deployment of the fibre cable directly from the reel or from a line laying machine mounted on the back of a vehicle.

The reel accommodates ruggedized connectors within the specified dimensions, and has accommodation for the optional connector cleaning kit. MARS reels are supplied as part of pre-spooled field ready tactical cable assemblies.

For More information, click on below link

<https://www.occFibre.com/products/mining-cables/>

<https://www.occFibre.com/products/deployable-solutions/>



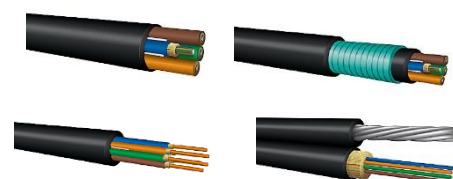


# **Optical Cable Corporation (OCC) Fibre Solutions**

## **INDUSTRY&MINING FIBRE OPTIC CONNECTION SYSTEMS**

Mining operations need reliable high speed and high capacity communications, monitoring and control systems that guarantee safety and efficiency in a tough and hazardous environment.

Increasingly, mining equipment is controlled remotely utilizing MSHA-rated fibre optic cable systems and harsh environment multifiber connectors. Such systems include CCTV and video camera security networks. Cameras facilitate monitoring of activity on belt lines, loadouts, silos, bins, and stockpiles, as well as enabling gate security and miner safety. Reliable communications and tracking systems are also essential to mining safety, enabling operators to locate and communicate with mine workers always – particularly in emergencies.



## **OCC Broadcast Solutions**

At OCC, we've always been known for our innovative, reliable products.

Thanks to the increasingly complicated demands of the broadcast industry, our customers don't just need smart products they need smart answers. That's why you can depend on the experts at OCC to provide data transmission solutions for every broadcast challenge, including deployable mobile units, permanent infrastructures, audio-visual systems, and more. Discover how some of the top sports, entertainment, and business organizations in the world have taken advantage of OCC Broadcast Solutions in a variety of different ways, and explore new highlights of OCC's extensive Fibre optic cable, hybrid cable, and connectivity product line designed specifically for the growing needs and requirements of the broadcast industry.



## **Broadcast Fibre Cables**

### **SMPTE Cables**

## **DEPLOYABLE BROADCAST FIBRE OPTIC**

### **Broadcast Enclosures**

### **Deployable Reels**



Click on below link for more Information  
<https://www.occFibre.com/products/>

## Tool Hire

**LAN Cabling Products Ltd (LCP) offers wide of Tools for Hire**  
**Please Note: We also sell all these tools and keep in stock**

**1: Fluke DSX-5000 Copper tester to test Cat5e, Cat6, Cat6A, Cat7 & Cat7A Cables**

P/N: TH-DSX-5000  
 Fluke networks DSX5000 Copper Tester



**2: Fluke DSX-8000 Copper tester to test Cat5e, Cat6, Cat6A, Cat7, Cat7A & Cat8 Cables**

P/N: TH-DSX-8000  
 Fluke networks DSX8000 Copper Tester



**3: Fluke CertiFibre PRO Quad to test Single Mode & Multimode Fibre**

When you hire the tester, please advise if Single mode or Multimode Fibre to test and types of connectors.

P/N: TH-CFP-PRO-Quad



**4: Fibre Optic Splicing Machine to Join the Fibre Cables**

The Fibre Splicing Machine Kit comes with Fibre Cleaver, Stripper, Alcohol wipes etc.

P/N: TH-FSH-TYPE39

P/N: TH-FSH-TYPE71C



## Tool Hire

### 5: Fibre Optic OTDR

P/N: TH-OTDR-HIRE

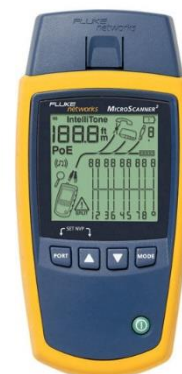
Fibre Optic OTDR Hire per day Nettest 4500



### 6: Fluke Networks MicroScanner™ PoE Cable Verifier

Up your efficiency on the job with Fluke Networks' MS2-100 MicroScanner2 Cable Verifier. This all-in-one device enables you to test multiple cable and service types including voice, data, and video. With innovative IntelliTone digital and analog toning, you are able to locate cable or wire pairs with a visual wire map, view pair lengths and the distance to a fault, ID cable, and even detect when there is an infrared device

P/N: TH-FLUKE-MS-POE



- 7: Electroline 06mm x 100M Yellow  
 Electroline 08mm x 100M Yellow  
 Electroline 10mm x 200M Yellow



### 8: 3M™ FIBRLOK™ MECHANICAL SPLICE/ NO POLISH

Does Mechanical Splice. SC / LC, No polish MM and SM connectors. Made for simple assembly.



### 9: Fibre Optic Cleaver

P/N: TH-CLEAVER



### 10: Fibre Optic Power meter light Source Hire SM and MM 850nm,1310nm,1550nm.

P/N: TH-FP





## Tools

### Cable Strippers



P/N: T4008



P/N: T4009



P/N: T4010

### Punch down/ Quick Crimp termination tool for Keystone Jacks



P/N: T4006



P/N: TP-CT6J-UTP/STP

**Quick Crimp Tool  
for PROPATCH Jacks  
P/N:60001-1/60001-2**

### Crimping Tool for RJ45 Unshielded & Shielded Plugs



P/N: T4108B



P/N: TP-CT4132



TP-CT4133

### Cable Cutters



P/N: T4066



P/N: T4077



P/N: T3069



## Tools

### Copper cable Testers



P/N: T4031



P/N:MT-8200-60-KIT



P/N:MS2-KIT



P/N: TP-PRO3000



P/N: FLUKE-MS-POE



P/N: FLUKE-MS-POE-KIT

### Fibre Optic Cleaning Products



Fibre Optic One Click Cleaner for Adapters



Fibre Optic cleaner for Patch Cords

P/N:FC-PRO1.25 (For LC Connectors).

P/N: FHUX500

P/N:FC-PRO-2.5 (For SC, ST & FC Connectors) (For: LC, SC, ST & FC Connectors)

### Fibre Optic Inspector

**HUXScope-L**  
Portable LCD Version



**HUXScope-H**  
Handheld LCD Version



**HUXScope-UE**  
USB Version



**HUXScope-WiFi**  
WiFi & USB Version



## **Structured Cabling Training**

**LAN Cabling Products Ltd** provides 3M/Corning & PROPATCH certification training. 3M/Corning & PROPATCH Certification Training Includes Fibre Optic and Copper Cabling solutions, theory and practical. LCP offers 25-year system Performance warranty for End customer sites. For installers to offer this warranty for installed sites, they need to be a certified installation company. For companies to become a certified installers/Partners, companies need to put their technician through a training program. The training is a two day course.

The course material will allow candidates to gain an understanding of Design and Implementing 3M/Corning & PROPATCH Network Cabling Solutions and Products with the latest ISO Standards. Additionally, the individual certification counts towards the reseller becoming a certified installer. Basic general topics within the networking industry are covered giving the candidate a general knowledge of terminology and core components, namely: -

- Global / ISO standards for Network Cabling and sub-Standards
- Types of networks – LAN, MAN and WAN's
- Network components and applications and Speeds
- Network standards, codes, regulations for installation, design and testing.
- Categories and Terminology of networks.
- Data pathways, rules and regulations.
- Bonding / Earthing networks, equipment, racks, trays etc.
- Backbone cabling, planning, choosing, implementing etc.
- Color coding
- Hands-on termination of Fibre Optics & Copper Solution products.

Additional, to the above, the following detailed items are discussed from a design, regulations, installation, termination and testing.

### **Fibre Networks**

- Health and safety
- Handling, waste disposal, Cleaning, Stripping and preparation for Fibre.
- Laser's and LED's
- Fibre explained, basic concepts, fabrication etc.
- Type of fibres, design, core's and cladding etc.
- Multimode vs single mode
- How fibre works, transmission, fibre wavelengths, installation, cable handling, bend radius's, pulling and hauling, termination and testing.
- Patch leads and Pigtails
- Splicing methods, mechanical and fusion.
- Types of connectors, adaptor / couplers, pigtails and splice enclosures.
- MPO and MUTOA fibre options.
- Fibre testing and power budgets.
- Inspection and cleaning.

### Copper networks

- Patch panels – 110 and un-populated
- Jacks – UTP, STP, FTP etc.
- Cable – CAT 5-7, indoor outdoor, gel, LSOH etc. and Patch cords
- Consolidation and MUTOA points
- Cable preinstallation, handling, procedures, termination, testing certification

### Warranty

- Installation and inspection processes
- Deviation
- Tolerances
- Testing and Certification

### Test equipment

- Proper setup on test equipment fluke Scanner for testing both copper and fibre networks
- Downloading test results and submission for certification
- Application of OTDR, Power Meter, Light Source testing, VFL.

This is a 2day training requirements – theory, practical and testing.

Note: Everything in the course is based on ISO standards and applies to all countries and all brands of products used globally



## **Cabling Codes and Standards used in Australia- New Zealand-Fiji**

-AS/NZS 2967, Optical Fibre communication cabling systems safety.

-AS/NZS 3084, Telecommunications installations-telecommunications pathways and spaces for commercial buildings.

-AS/NZS 3085.1, Telecommunications installations- administration of communications cabling systems – basic requirements.

-AS/NZS 11801-1, Information Technology – Generic cabling for customer premises

-AS 11801-2, Information technology, Generic cabling for customer premises-Part 2: Office

-AS 11801-3, Information technology, Generic cabling for customer premises-Part 3: Industrial

-AS 11801-4, Information technology, Generic cabling for customer premises-Part 4: Single tenant Homes

-AS 11801-5, Information technology, Generic cabling for customer premises-Part 5: Data Centres.

-AS 11801-6, Information technology, Generic cabling for customer premises-Part 6: Distributed building Services

-AS 30129, Information technology, Telecommunications bonding networks for building and other Structures

### **Part 1: General requirements.**

-AS/NZS 14763.3, Information technology–Implementation and operation of customer premise cabling, Part 3: Testing of optical fibre cabling.

-AS/NZS ISO/IEC 14763.2, Information technology–Implementation and operation of customer premise cabling, Part 2 Planning, and installation.

-AS/NZS ISO/IEC 61935.1, Specification for the testing of balanced and coaxial information technology cabling.

-NZS 4219, Seismic performance of engineering systems in buildings. Cabling Codes and Standards used in Australia- New Zealand-Fiji

### **Testing Cable Classes:**

#### **Cable Type**

Cat5e-  
Cat6  
Cat6A  
Cat7  
Cat7A  
Fibre MM & SM

#### **Class**

Class D  
Class E  
Class EA  
Class F  
Class FA  
AS/NZS 14763.3



## **BRANDS**

CORNING

**3M**



**Micronet®**  
Making Communication Easier



### **LAN Cabling Products Ltd**

**22D Industry Road Penrose**

**Auckland, New Zealand 1061**

**PH: 00649 579 9766, 006421742726, 006421742883**

**Email: Sales@Lcp.co.nz**

### **LAN Cabling Products Fiji PTE Ltd**

**5 Holland Street, Toorak**

**Suva, Fiji Islands**

**PH: 00679 931 2154, 00679 7776526, 00679 3384778**

**Email: Lcp@connect.com.fj, Sales@Lcp.co.nz**

### **LAN Cabling Products Ltd-Sydney Australia**

**4 Nott Place, Mt. Annan, NSW 2567, Australia**

**PH: 0064 405 253 101, Sales@Lcp.co.nz**