

PROPATCH CAT.6A STP Shielded RJ45 Keystone Jack



FEATURES:

- Keystone mount
- Easy shield / grounding termination.
- Slim line jacks fits 24 in 1U patch panel

TRANSMISSION PERFORMANCE:

Meet all requirements specified in connecting hardware requirement of ISO / IEC 11801, Category 6A IEC 60603-7-51 ANSI / TIA-568-C.2, Category 6A

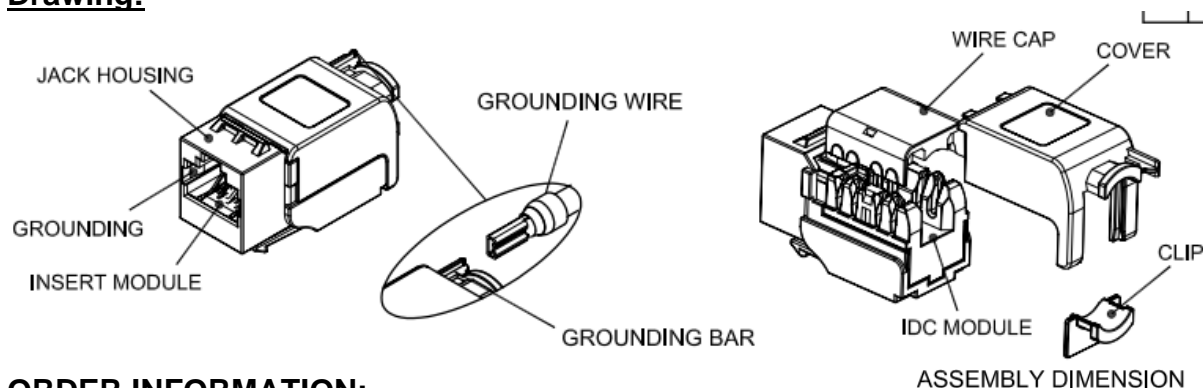
MECHANICAL: Insertion / Extraction Life:750 Cycles Minimum IDC Wire Gauge:22-24

PHYSICAL: Housing: Zinc-alloy fully shielded Spring wire: Phosphor Bronze alloy plated with 50 micro- inches of gold.

IDC: Phosphor bronze alloy with 100 micro-inches 100% Sn Alloy.

Electrical: Electrical Insulation resistance: 500 MΩ min.@100V d.c.
Dielectric withstanding Voltage: 1000V d.c or a.c peak contact @60Hz for 1.

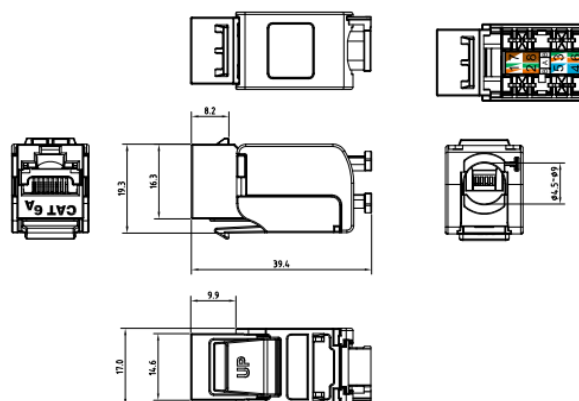
Drawing:



ORDER INFORMATION:

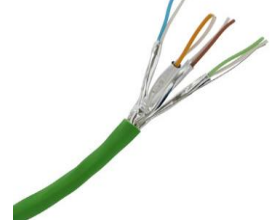
Part Number: 60001-C6ASTP

Description: PROPATCH cat6a shielded RJ45
Keystone Jack



Related Cables

- **PROPATCH CAT6 F/UTP Shielded Cable Green**
P/N:60000-4A
- **PROPATCH CAT7 S/STP Shielded Cable Green**
P/N:70000-4
- **PROPATCH 12 Port Unloaded STP Patch Panel**
P/N:60010-1STP
- **PROPATCH 24 Port Unloaded STP 19" Patch Panel**
P/N:60010-4U



- **PROPATCH 24 Port Unloaded STP 19" Patch Panel Angel**
P/N:60010-4UA



- **PROPATCH CAT6A RJ45 Field Termination 10GB Plugs**
P/N: MP-C6ARJ45STP-FT



- **3M Colored Keystone Clips for PDL Plates**
P/N:3MC-KCPDL110-XX
Available Colours: White, Black, Red, Green, Yellow, Orange, Blue.



PROPATCH CAT6A Shielded 10GB Copper Cabling Solution

In less than 10 years, the speed of local area networks (LAN) has gone from less than 10 Mb/s to several Gigabits per second. Market specialists foresee LAN requirements accelerating and a progression in bandwidth of horizontal cabling, traditionally on copper cables. The 10 Gigabit Ethernet standard* (10GBASE-T) for twisted pair copper cabling is now a reality.

The new revisions of international standards** on cabling systems ISO/IEC 11801 and ANSI/TIA-568.2-D respectively define Class EA and Category 6A cabling which both offer a bandwidth of 500 MHz. These developments mean that companies are now able to put in place a high-speed fibre optic backbone and migrate towards higher speed copper cabling in the horizontal.

Many LAN administrators plan to install high performance copper cabling systems which make it possible to support both present and future applications. Also Class EA / Category 6A cabling is increasingly used where higher speeds are essential.

10 Gigabit per second copper cabling technologies

The IEEE 802.3an group chose a maximum frequency of 500 MHz which doubles the frequency range of the original Category 6/Class E which is specified up to 250 MHz. The IEEE group also defined a new electrical parameter for the channel which is "alien cross talk" (AXT). AXT is all the electrical noise created on a cable or an RJ45 jack by neighbouring cables and jacks.

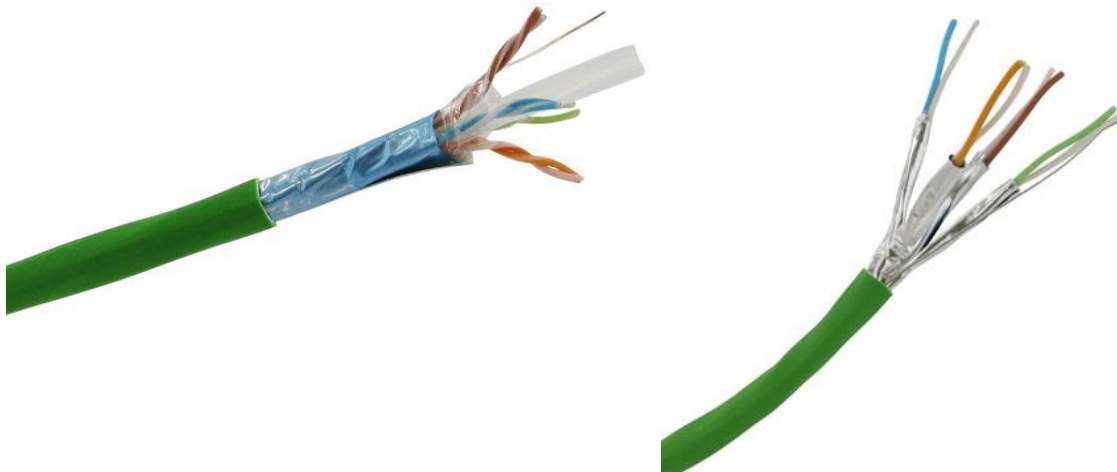
The number one interference in 10GBASE-T is AXT, the effects of which disturb not only the cables, particularly in the cable routes, but also the RJ45 jacks, especially in patching racks where there are many adjacent links.

PROPATCH Category 6A Solution Class EA / Category 6A is designed for Class EA and Category 6A on twisted copper pairs in compliance with the most recent ISO/IEC and TIA standards for Channel and Permanent Link configurations. The PROPATCH Class EA / Category 6A Solution is differentiated by the unequalled reduction of the effects of AXT over the entire channel. The solution is comprised of a complete range of new RJ45 jacks, twisted pair copper cables, 19" patch panels and RJ45 patch cables. The PROPATCH Class EA / Category 6A solution fully meets the requirements of a 10 Gb/s local area network infrastructure.



Class EA / Category 6A Cabling System

The PROPATCH Category 6A and Category 7 cables have been specially developed to ensure excellent immunity against AXT up to 500 MHz. All cables of PROPATCH design have a general shield and/or screen per pair. PROPATCH cables are easy to install and do not require any special installation precautions. Connection to the Cat6A RJ45 jack remains simple and familiar. PROPATCH cables are available with PVC & LSZH sheath.



PROPATCH 24Port 19" Rack Mount Patch Panel

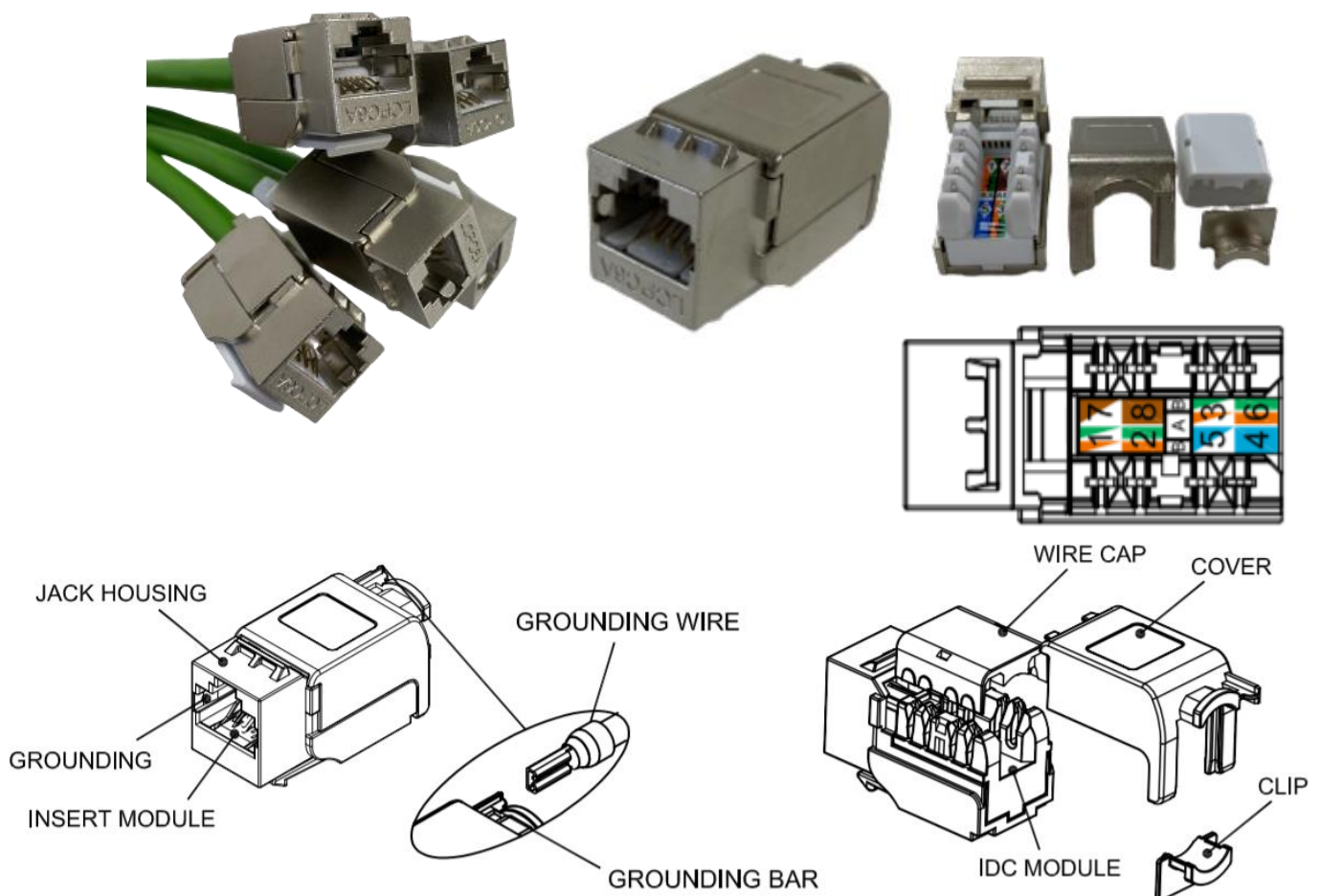
PROPATCH patch panels accommodate up to 24 RJ45 ports in one unit of rack space (1U). Their modular design makes them easy to install on site in 19" racks. All PROPATCH patch panels have an earth stud which permits continuity of earth with the CAT6A RJ45 jacks.



PROPATCH CAT6A RJ45 STP Shielded Jacks

The **PROPATCH CAT6A RJ45 STP Shielded Jacks** has been specially developed for Class EA and Category 6A systems on twisted pair cable in compliance with the standards ISO/IEC 11801 and ANSI/TIA-568.2-D for Channel and Permanent Link configurations. PROPATCH Cat6A RJ45 Shielded jacks have been specially developed to support Ethernet 10Gb/s over twisted pairs applications (10GBASE-T), according to IEEE 802.3an 10GBASE-T standard. PROPATCH also supply different colors of Keystone Clips Face Plates.

PROPATCH keystone termination tool can significantly reduce the time taken for termination. In one simple action, 4 pairs of wires are terminated, and excess wire is cut off, eliminating the need for a secondary trim step.



Quick Crimp Termination Tool:



PROPATCH CAT6A Shielded RJ45 10GB Field Termination Plugs

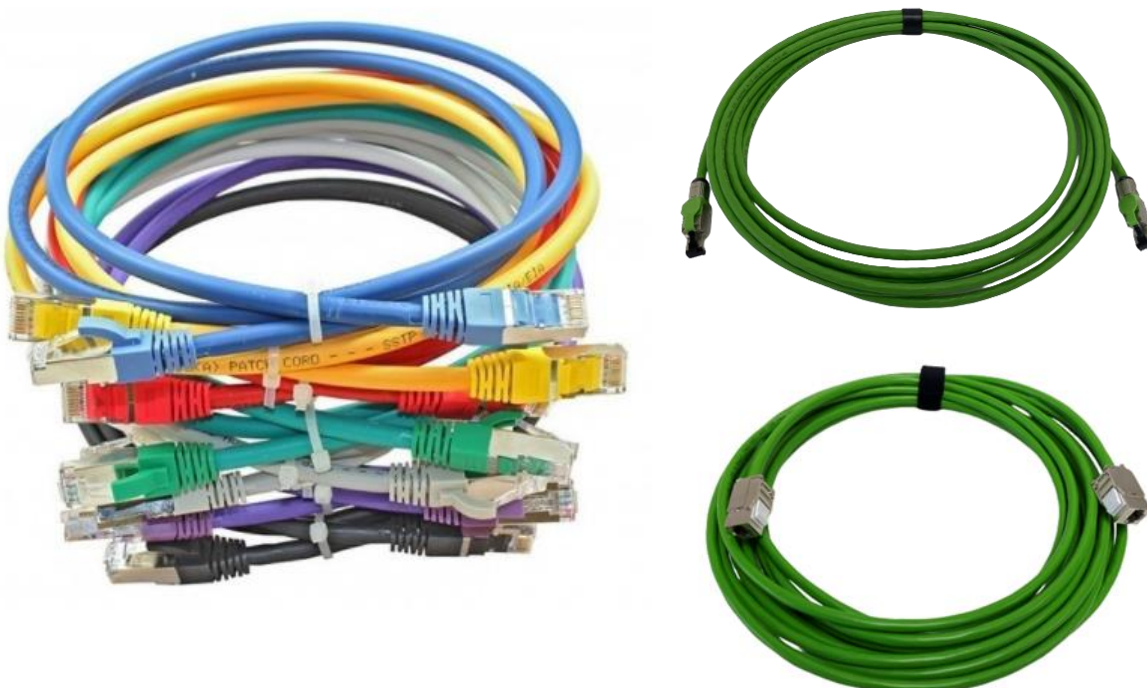
PROPATCH Cat 6A STP Full Shielded Field Termination plug is manufactured to terminate with Cat6a or Cat7 larger diameter (23AWG to 26AWG) cable, which could be fit with the outer diameter from 6.0~7.5mm. Having PROPATCH network cabling solution for datacenter and suitable for both solid cable and stranded cable. Unique design for easy quick, and dependable installation with crew-fit boot. IP20 anti-dust plug cover is provided as well.



PROPATCH Shielded Patch Cords

PROPATCH patch cords have been specially designed to give excellent immunity against AXT up to 500 MHz, in particular to reduce the effect of AXT in patching racks where there are many adjacent links. PROPATCH patch cables have a general braid and a screen per pair.

Shielded Patch Cords are Available in Cat6A & Cat7 in different color & lengths. LCP can also supply Custom made Patch Cords in a different length with RJ45 modular Plug, RJ45 Field Termination plugs and Keystone Cat6A Jacks to run between cabinets as backbone.



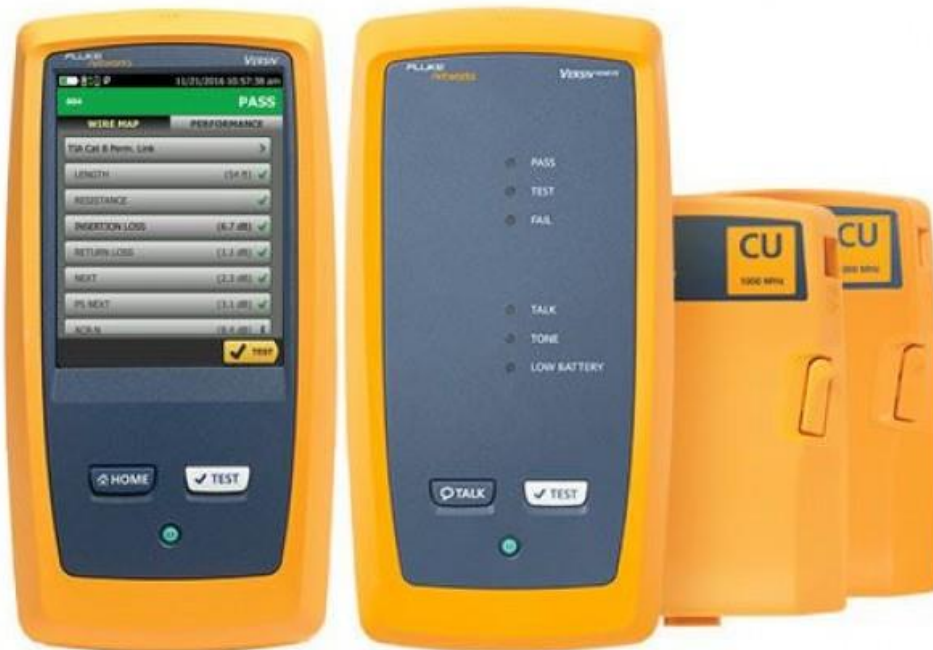
25 Year System Performance Warranty

LAN Cabling Products Ltd (LCP) offers an extended 25year warranty for the entire range of components in PROPATCH Class EA / Category 6A system. LCP guarantees the electrical performance of the PROPATCH Class EA / Category 6A solution in relation to the specifications ISO/IEC 11801 and ANSI/TIA-568.2-D for cabling systems of the new Class EA and Category 6A in compliance with the standards ISO/IEC 11801 and ANSI/TIA-568.2-D for Channel and Permanent Link configurations.

Testing Tool for Shielded Cables

LCP offers Hireage service of Fluke DSX-5000 & DSX-8000 Copper tester to test Cat6A or Cat7 Cables.

Please Note, you can purchase these tolls from us.



Supplier Information

LAN Cabling products Ltd
22D Industry Road, Penrose Auckland
New Zealand, 1061
PH: +649 579 9766, Sales@Lcp.co.nz

LAN cabling Products Fiji PTE Ltd
5 holland Street Suva, Fiji Islands
00679-3384778, LCP@connect.com.fj

WWW.PROPATCH.CO.NZ